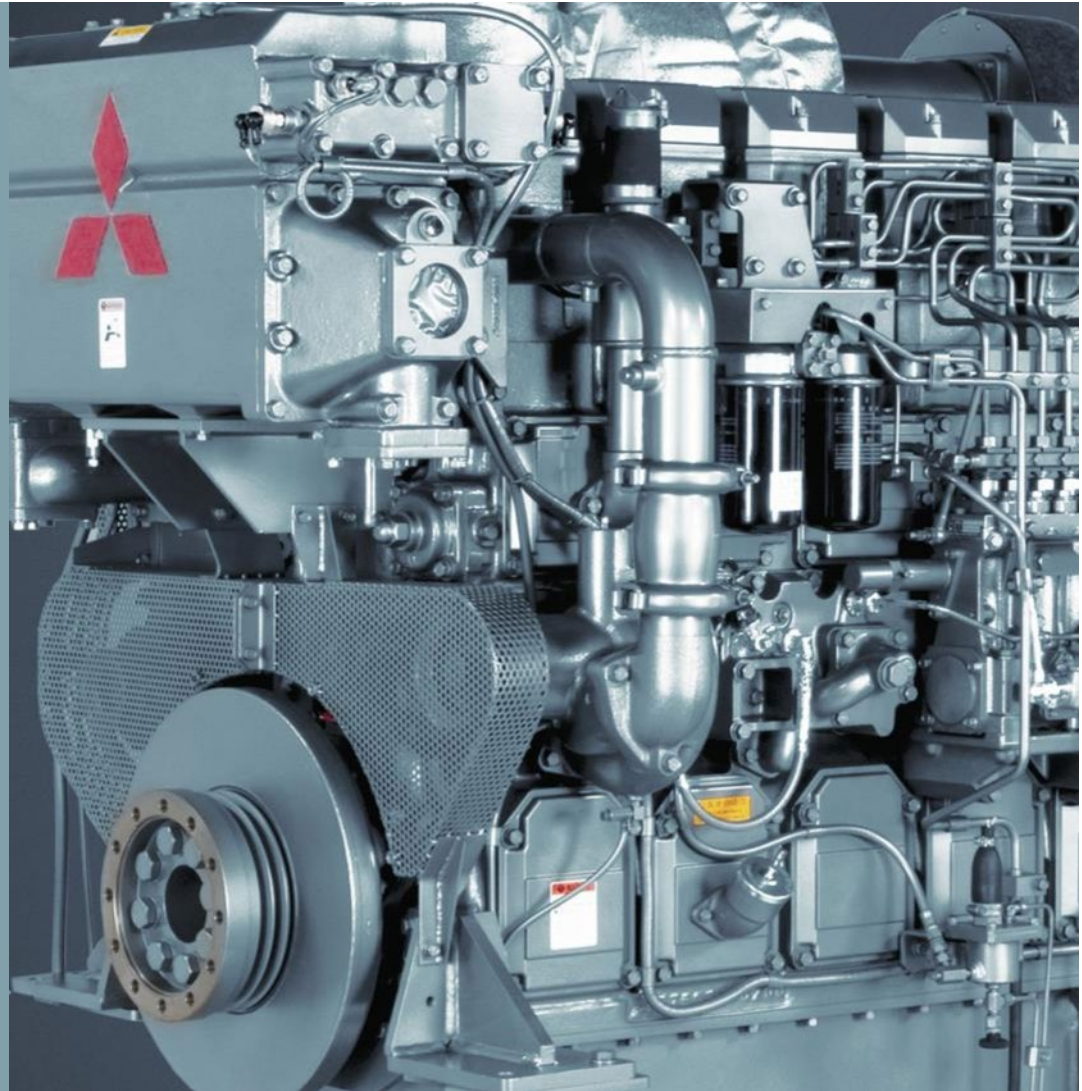
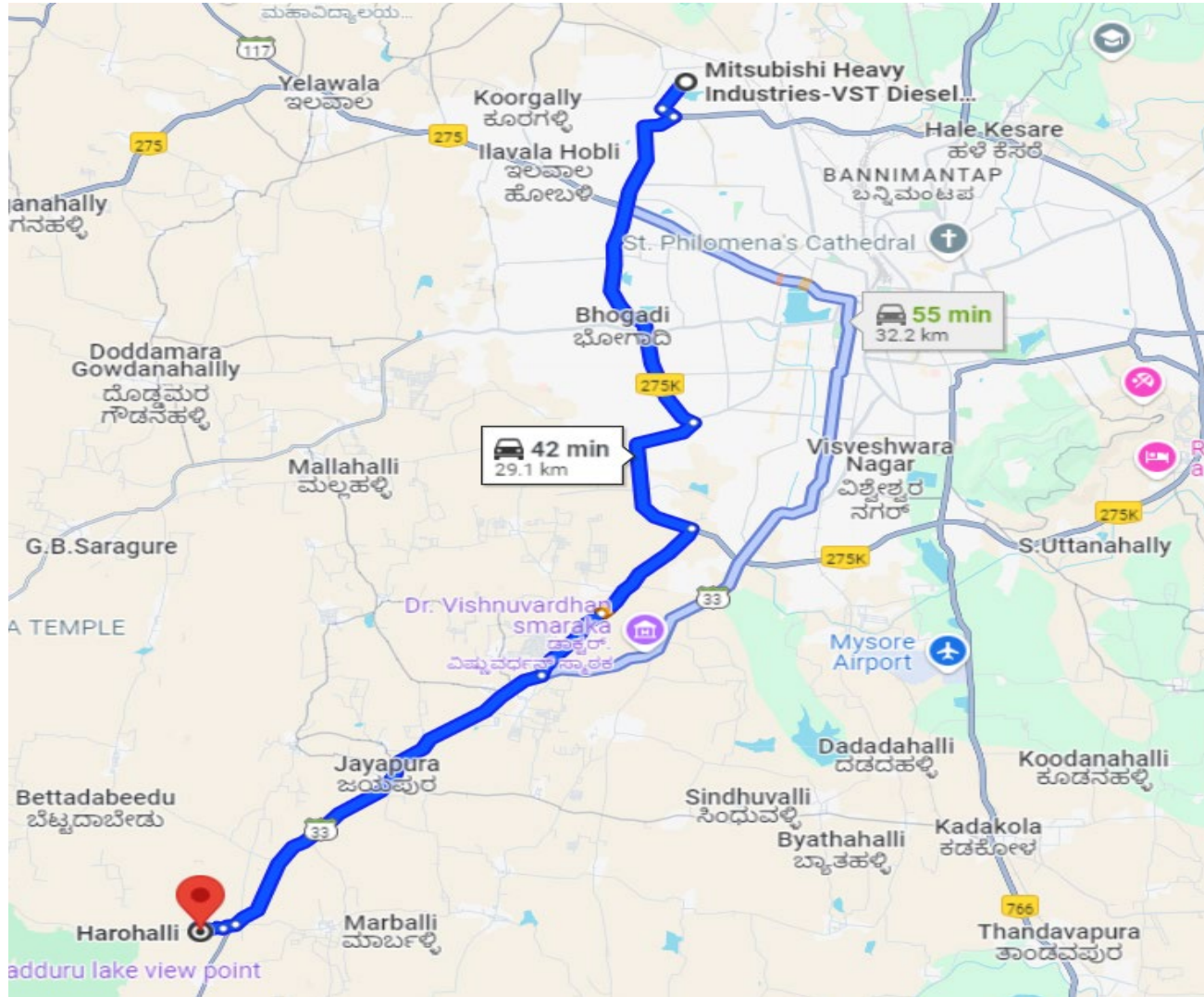


CSR 24-25

Mitsubishi Heavy Industries-VST
Diesel Engines Private Ltd.



MVDE TO HAROHALLI DISTANCE IN KM



School Old photos

1. High Primary School



2. High School



PROJECT DONE UNDER CSR BUDGET 24-25



1] Classroom construction - 3 Nos

MOVE THE WORLD FORWARD  **MITSUBISHI
HEAVY
INDUSTRIES
GROUP**



2] Classroom roof renovation – 3 Nos



3] Dining hall - 1 No

MOVE THE WORLD FORWARD  RD **MITSUBISHI
HEAVY
INDUSTRIES
GROUP**



4] Compound Wall – L Shape



5] Girls Toilet – 1 No























