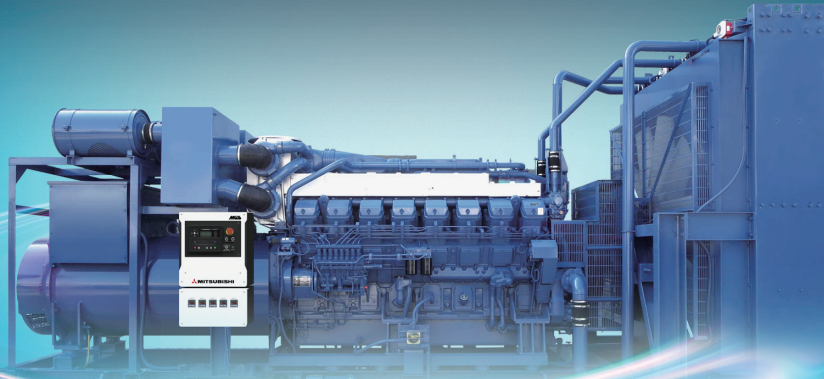
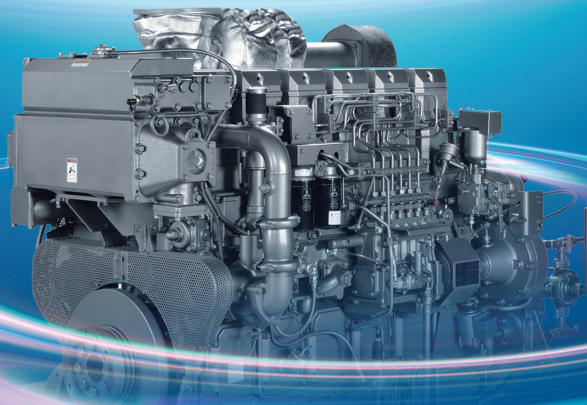


MITSUBISHI DIESEL ENGINE OIL



For high performance realization



- High thermal resistance
- Superior detergent-dispersant properties
and high acid-neutralization properties
- Superior durability



Category
CH-4

15W-40



**MITSUBISHI HEAVY INDUSTRIES
ENGINE & TURBOCHARGER**

MITSUBISHI DIESEL ENGINE OIL



Category: CH-4 15W-40

High thermal resistance

With engines becoming more compact and powerful, oil needs to be capable of withstanding increasingly high temperatures. Mitsubishi Diesel Engine Oil is an oil offering good oxidation stability that exhibits little deterioration even when used for long periods of time.

Superior detergent-dispersant properties and high acid-neutralization properties

Contains a balance of carefully selected additives to minimize engine soiling and friction even when the engine is being driven hard at high speeds or high loads.

Superior durability

Easily passes tests for the Category CH-4 in API oil service classifications, promising stable operation and superior durability.

Mitsubishi Diesel Engine Oil is a high-performance diesel engine oil that meets the following criteria:

When choosing a viscosity grade for Mitsubishi Diesel Engine Oil, please make your selection based on the standards shown in the tables below:

Items			Typical Properties	Test Method
Density	15°C	g/cm ³	0.8805	ASTM D4052
Flash Point	COC	°C	234	ASTM D92
Viscosity	40°C	mm ² /s	108	ASTM D445
	100°C	mm ² /s	14.01	ASTM D445
Pour Point		°C	-42.5	ASTM D97
Total Acid Number		mgKOH/g	3.0	ASTM D664
Total Base Number	HClO ₄	mgKOH/g	13	ASTM D2896
API	CH-4			
Unit	208 L (05392-03600), 20 L (05392-03500)			

Note: Diesel engine oil of Category CH-4 in API oil service classifications offers even lower acid neutralization properties than Category CF.

The all-seasons oil (15W-40) is an oil that facilitates swift engine start-up and offers superior fuel economy all year round.

When fuel used for engine has sulfur content of 0.2% or less, CH-4 Class can be used, however, for the CH-4 Class lube oil, TBN measured by the hydrochloric.

MITSUBISHI HEAVY INDUSTRIES ENGINE & TURBOCHARGER, LTD.

Engine & Energy Division
Engine Service Department

3000 Tana, Chuo-ku, Sagamihara-shi, Kanagawa, 252-5293, Japan
Phone: +81-42-763-7615 Fax: +81-42-763-0814
www.mhiet.co.jp/en/

Inquiries