

CORPORATE PROFILE

**MITSUBISHI HEAVY INDUSTRIES
COMPRESSOR CORPORATION**

CORPORATE OUTLINE

Mitsubishi Heavy Industries Compressor Corporation (MCO) was established as a 100% owned subsidiary company of Mitsubishi Heavy Industries, Ltd.(MHI) in April 2020, by splitting off the compressor strategic business unit of MHI. MCO is one of the world top class manufacturing companies dedicated for API centrifugal compressor and mechanical drive steam turbine which will be used widely for oil & gas, petrochemical industries. MCO has a very rich experience and delivery records for global customers, 100 units shipment every year, cumulative total over 4,000 units, for more than 60 countries. We deploy our own staffs as resident engineers and technical advisors, etc. in USA, United Kingdom, Brazil and Saudi Arabia and Switzerland to accommodate our customer's needs in timely manner. In addition, we are expanding our own manufacturing capability in USA (Houston, TX) and through providing the production licenses to Korean manufacturers and setting-up global manufacturing and service alliances in various countries.

Corporate Principles

MCO's mission is to provide you with highly efficient compression systems, incorporating cutting edge technologies designed to maximize physical plant reliability & availability; to ensure safe, uninterrupted and productive operations; and to contribute significantly to your company's long term competitiveness and financial success.



- MCO will supply high-quality, reliable products that are appreciated by our customers around the world through conscientious manufacturing and speedy, fine-tuned everyday services performed under the belief declared in the MHI corporate creeds that "the customer comes first".
- MCO is earnestly working to realize a carbon-neutral society with the latest technologies, as a core company of the MHI Group. We aim to contribute to building a sustainable society.

Our employees take pride in their work. The pride is derived from earning trust from customers and delivering value that satisfies customers.

Morihiko Masaki

President & CEO

Mitsubishi Heavy Industries Compressor Corporation

CORPORATE PROFILE

Name:	Mitsubishi Heavy Industries Compressor Corporation (MCO)
Stablished:	April 2010
Head office:	6-22, Kan-on-shin-machi 4-chome, Nishi-ku, Hiroshima, 733-8553 Japan
Business outline:	Design, manufacturing, sales and engineering services of compressor, driving turbine, gears, auxiliary machinery and control systems. Consulting services and incidental related business of the above machinery and equipment
Capitalization:	4,000 million yen

HISTORY

- 1870** Origin of Mitsubishi (Tsukumo Shokai)
- 1884** Foundation of Mitsubishi Heavy Industries Ltd.
- 1908** Start of manufacturing of 1st Steam turbine
- 1917** Start of manufacturing of 1st Compressor
- 1944** Inauguration of Hiroshima Engine Works and Hiroshima Shipyard
- 1986** Start of sales of Mitsubishi Advanced Compressor "MAC"
- 2000** Consolidation of 3 compressor business operation units of Takasago, Nagasaki and Yokohama into Hiroshima Works
- 2010** Establishment of Mitsubishi Heavy Industries Compressor Corporation (MCO), as Strategic Business Unit (SBU) for Compressor of MHI Group
- 2011** Establishment of MCO Saudi Arabia, LLC (MCOSA) in KSA
- 2012** Establishment of MHI Compressor International Corporation (MCO-I) in USA
- 2015** Start of MCO-I Houston Works at Pearland, TX.
*/MCO-I name is changed as "Mitsubishi Heavy Industries Compressor International Corporation"
- 2016** Establishment of MHI Compressor do Brasil Ltda. (MCO-B) in Brazil
- 2017** Completion of Headquarters building
- 2018** Establishment of MHI Compressor Korea, Ltd.(MCO-K) in Korea
- 2026** Acquired AST Turbo AG of Switzerland



HEAD OFFICE BUILDING

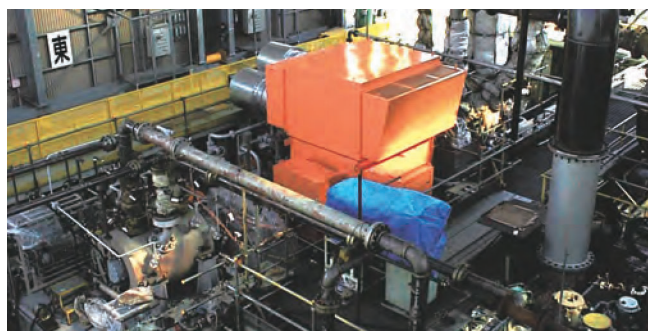
INTRODUCTION OF PRODUCTS

CENTRIFUGAL COMPRESSORS & MECHANICAL DRIVE STEAM TURBINES

Our centrifugal compressors, known as Mitsubishi Advanced Compressor (MAC), and mechanical drive steam turbines play vital roles in various kinds of chemical plants, and contribute the development of the world's petrochemical industries, such as ethylene plants, fertilizer plants and oil refineries. They are also supplied to gas field applications, such as LNG plants, gas processing and production facilities and gas pipelines all over the world, to provide feedstock for chemical industries and to ensure a stable supply of natural gas to their facilities. Through many long years of designing, building and supplying these machines to customers around the globe, MCO has achieved the highest levels of quality, efficiency, reliability and maintainability. Our mechanical drive steam turbines have established a worldclass reputation for reliability, backed by our extensive supply experience, as well as a reputation for high performance achieved through cutting edge technologies.



Methanol Plant



Carbon Dioxide re-Injection Compressor



Gas Pipeline Station



Cracked Gas Compressor & Steam Turbine for Ethylene

INTEGRALLY GEARED COMPRESSORS

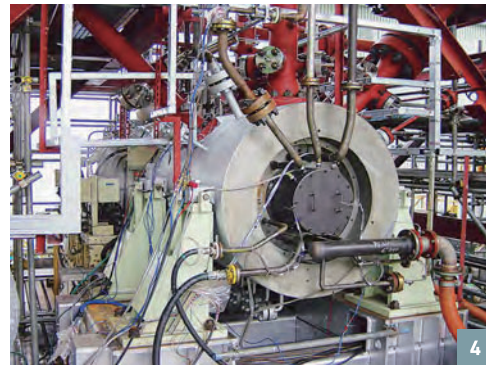
Our integrally geared compressors are designed and manufactured applying our own technologies developed over many decades. These compressors are being supplied to a wide range of fields, such as petrochemical plants and air separation plants, having acquired an excellent reputation from customers in all fields.



Integally Geared Compressor for PTA Plant



Double Flow Integally Geared Compressor



1. Compression Module for Air Separation Unit
2. Compressor for Floating Production Storage and Offloading Facility (FPSO)
3. Refrigerant Compressor & Steam Turbine
4. High-Pressure Compressor for Gas Injection

TEST STAND FOR COMPRESSORS

We manufacture compressors and steam turbines at the same factory under single consistent quality control and production control systems, which enable us to keep the highest levels of quality and delivery. A string test of the compressors and a steam turbine can be carried out on one of the world's largest test stands, which can meet the needs of ethylene plants having a production

capacity of up to 2 million tons per annum (MTPA). This can thus confirm the performance and reliability of the train prior to shipment, to ensure delivery of a robust package. We have earned an excellent reputation from customers for the reliability of entire compressor packages, through the consistent quality control and schedule control of our engineering and manufacturing processes.

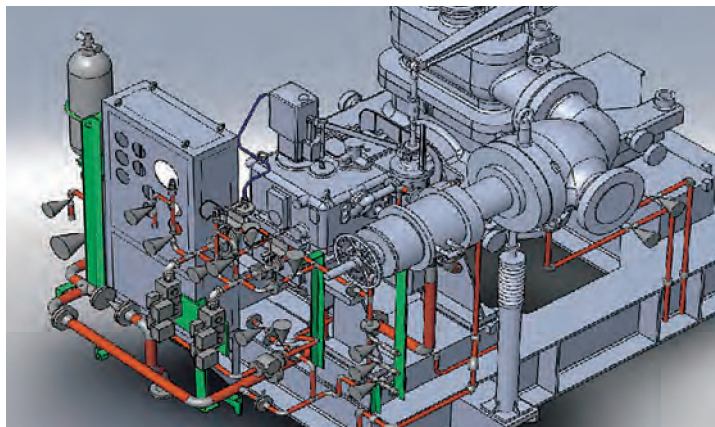


1. Test Stand for Ultra-Large-Scale Compressors Train
2. Appearance of Test Stand

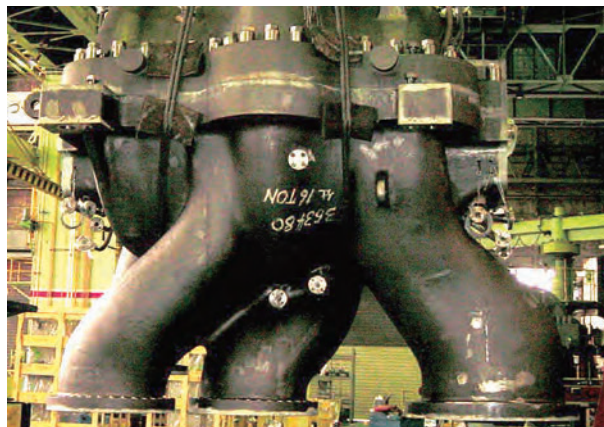
ORGANIZATION OF SERVICE

AFTER-SALES SERVICE

We provide timely maintenance service, and dispatch skilled technical advisors to maximize the availability of customer plants and to enable their long-term stable operation. We also provide total consulting and engineering services to meet customers' requirements for improvement of plant performance and incremental plant capacity increase.



Study on revamping by the 3D CAD engineering



Replacement of compressor by flexibly coordinating with the shop layout

TRAINING

We have our own training center at our head office in Hiroshima which provides on-site and off site education programs through workshops to meet customers' requirements for maintenance and operation training.



TRAINING CENTER

Effective training is provided utilizing operating simulators or various types of precision models based on latest technologies in addition to gathering knowledge through basic training courses.



OPERATION & MAINTENANCE TRAINING CENTER

Training for start-up by use of a turbine model

WORLD WIDE NETWORK



- **Head Office**
Address : 4-6-22, Kan-on-shin-machi, Nishi-ku, Hiroshima, 733-8553 Japan
Phone : 81-82-291-2200 Fax : 81-82-294-0345
- **Tokyo Office**
Address : 5-34-6 Shiba, Minato-ku, Tokyo 108-0014, Japan
Phone : 81-3-5427-3770 Fax : 81-3-5427-3772
- **Mitsubishi Heavy Industries Compressor International Corporation (MCO-I / Pearland Works)**
Address : 14888 Kirby Dr. Houston, Texas 77047, USA
Phone : 1-832-710-4700 Fax : 1-832-710-4600
- **Mitsubishi Heavy Industries EMEA, Ltd. (MHI-EMEA) (Head Office)**
Address : Building 11, Chiswick Park, 566 Chiswick High Road, London W4 5YA, United Kingdom
Phone : 44-20-3480-7500 Fax : 44-20-3480-7501
- **MCO Saudi Arabia, Limited (MCOSA)**
Address : Blu Business Park Building 7420, 4th Floor (Office No. 409) Al-Dammam 327 Road, 2nd Industrial City, 34334, Kingdom of Saudi Arabia
Phone : 966-13-896-5354
- **MHI Compressor do Brasil Ltda. (MCO-B) (Piracicaba Headquarters)**
Address : Avenida Doutor Morato 190, Sala 01, Vila Rezende, Piracicaba, Sao Paulo, SP, Brasil - CEP: 13405-260
Phone : 55-19-2534-2003 Fax : 55-19-2532-2829
- **(Rio de Janeiro Office)**
Address : Praia de Botafogo 228, Sala 501, Botafogo Rio de Janeiro, RJ, Brasil - CEP: 22250-040
Phone : 55-21-3174-0670
- **MHI Compressor Korea, Ltd. (MCO-K)**
Address : 8F, Gran Seoul Tower 1, 33 Jong-ro, Jongno-gu, Seoul 03159, Korea
Phone : 82-(0)2-753-7712 Fax : 82-(0)2-753-7713
- **Mitsubishi Heavy Industries(Shanghai)Co.,Ltd.(MHISH)**
Address : 22nd floor, Office Tower 1, Raffles City Changning, No.1133 Changning Road, Changning District, Shanghai, 200051, China
Phone : 86-21-6841-3030
- **AST Turbo AG (AST)**
(Headquarters)
Talstrasse 24 8852 Altendorf Switzerland
Phone : 41-56-500-06-45
AST Turbo Energy LLC
Ground Floor Chamber of Commerce Building Al-Shati, Fanateer 35811 Al Jubail Saudi Arabia
Phone : 966-505-427-153
AST Turbo USA Inc.
16000 Park Ten Pl-203 Houston, TX 77084 USA
Phone : 1-346-510-6981
- **MHI Russia LLC.**
Russia : Moscow
- **Mitsubishi Heavy Industries (China) Co.,Ltd.(MHIC)**
China : Beijing
- **Mitsubishi Heavy Industries Asia Pacific Pte. Ltd (MHI-AP)**
Singapore
- **Mitsubishi Heavy Industries India Private Ltd.(MHII)**
India : New Delhi
- **Mitsubishi Heavy Industries, Ltd. Middle East Office**
United Arab Emirates : Dubai
- **MHI-Australia, Pty. Ltd. (MHI-AUS)**
Australia : Sydney



MITSUBISHI HEAVY INDUSTRIES COMPRESSOR CORPORATION

4-6-22, Kan-on-shin-machi, Nishi-ku,
Hiroshima, 733-8553 Japan
TEL +81-82-291-2200

SPECTRA ▶

<https://mco.mhi.com> | spectra.mhi.com