

# WALL MOUNTED SRK



Only used with Multi System.

**SRK 50•60**



Common to the both case of Single and Multi

**SRK 100**



\*Not all functions are available with all remote control options.

**Wired remote control (Option)**



**RC-EX3A**



**RC-E5**



**RCH-E3**

## Point 1 Elegant Timeless Design

The new SRK series air-conditioners have been stylishly designed with rounded contours that fit beautifully into any of Europe's diverse interior settings.

The design was created by the Italian industrial design studio Tensa srl, based in Milan, to respond to a broad spectrum of local user needs.

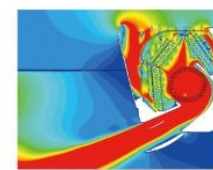
## Point 2 Jet Technology

**We used the same aerodynamic analysis technology as used in developing jet engines.**

CFD (computational fluid dynamics), used in blade shape design of jet engines, has been applied to the design of air channels in air conditioners to develop the ideal air channel system (air circulation). The airflow of the jets created in this system enable a large volume of air to be blown with minimum power consumption, yet the air flow is uniform, quiet and reaches points a long distance from the blower.



(C) Mitsubishi Aircraft Corporation



Fast ← → Slow  
Colors in the figure show the air speed.

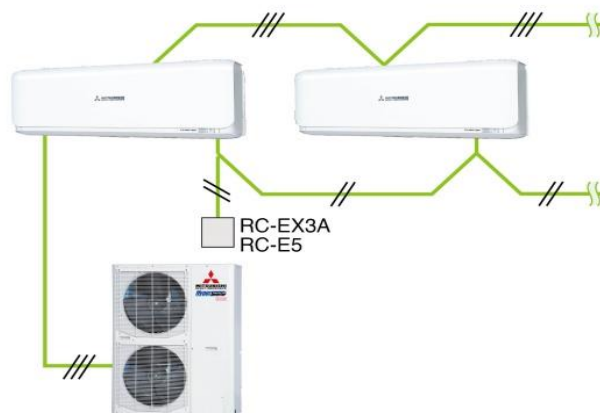
## Point 3 Long Reach Air Flow

Powerful airflow is realized by Jet technology.  
Good for large living rooms and shops, which increase comfort.



## Point 4 Indoor unit connection

Max three indoor units are connectable to one outdoor unit.



\*SC-BIKN2-E is necessary to connect to wired remote controller.





## SPECIFICATIONS

The values are for simultaneous Multi operation.

Set model name		Hyper Inverter					
		SRK100VNXPSX	SRK125VNXPSX	SRK140VNXPSX	SRK100VSPZSX	SRK125VSPZSX	SRK140VSPZSX
		Twin		Triple	Twin		Triple
Indoor unit		SRK50ZSX-W x 2	SRK60ZSX-W x 2	SRK50ZSX-W x 3	SRK50ZSX-W x 2	SRK60ZSX-W x 2	SRK50ZSX-W x 3
Outdoor unit		FDC100VNX	FDC125VNX	FDC140VNX	FDC100VNX	FDC125VNX	FDC140VNX
Power source		1 Phase 220-240V, 50Hz / 220V, 60Hz			3 Phase 380-415V, 50Hz / 380V, 60Hz		
Nominal cooling capacity (Min~Max)		kW 10.0 ( 4.0 ~ 11.2 )	12.5 ( 5.0 ~ 14.0 )	14.0 ( 5.0 ~ 16.0 )	10.0 ( 4.0 ~ 11.2 )	12.5 ( 5.0 ~ 14.0 )	14.0 ( 5.0 ~ 16.0 )
Nominal heating capacity (Min~Max)		kW 11.2 ( 4.0 ~ 12.5 )	14.0 ( 4.0 ~ 17.0 )	16.0 ( 4.0 ~ 18.0 )	11.2 ( 4.0 ~ 16.0 )	14.0 ( 4.0 ~ 18.0 )	16.0 ( 4.0 ~ 20.0 )
Power consumption		Cooling/Heating kW 2.66 / 2.60	3.60 / 3.48	3.98 / 3.68	2.66 / 2.60	3.60 / 3.48	3.98 / 3.68
EER/COP		Cooling/Heating 3.76 / 4.31	3.47 / 4.02	3.52 / 4.35	3.76 / 4.31	3.47 / 4.02	3.52 / 4.35
Inrush current		A 5	5	5	5	5	5
Max. current		A 24	26	26	15	15	15
Sound power level*1	Indoor*2	Cooling/Heating	59 / 62	62 / 63	59 / 62	62 / 63	59 / 62
	Outdoor	Cooling/Heating	70 / 70	70 / 70	70 / 70	70 / 70	72 / 72
Sound pressure level*1	Indoor*2	Cooling (Hi/Me/Lo/Ulo)	44 / 39 / 31 / 22	46 / 41 / 33 / 22	44 / 39 / 31 / 22	46 / 41 / 33 / 22	44 / 39 / 31 / 22
	Outdoor	Heating (Hi/Me/Lo/Ulo)	46 / 41 / 33 / 23	46 / 42 / 34 / 23	46 / 41 / 33 / 23	46 / 42 / 34 / 23	46 / 41 / 33 / 23
Air flow	Indoor*2	Cooling/Heating	48 / 50	48 / 50	49 / 52	48 / 50	49 / 52
	Outdoor	Cooling (Hi/Me/Lo/Ulo)	14.3 / 12.4 / 7.8 / 5.4	16.3 / 13.4 / 8.9 / 5.4	14.3 / 12.4 / 7.8 / 5.4	16.3 / 13.4 / 8.9 / 5.4	14.3 / 12.4 / 7.8 / 5.4
		Heating (Hi/Me/Lo/Ulo)	17.3 / 14.3 / 9.8 / 6.2	17.8 / 13.7 / 10.9 / 6.2	17.3 / 14.3 / 9.8 / 6.2	17.8 / 13.7 / 10.9 / 6.2	17.3 / 14.3 / 9.8 / 6.2
Exterior dimensions		HeightxWidthxDepth	mm 305 x 920 x 220	1,300 x 970 x 370	105	100 / 100	100 / 100
Net weight		kg 13	105	105	9.52(3/8") / 15.88(5/8")	Max.100	Max.30 / Max.15
Ref.piping size		Liquid/Gas	ømm 9.52(3/8") / 15.88(5/8")	Max.100	Max.30 / Max.15	-15~43*3	-20~20
Refrigerant line (one way) length		m	Max.100	Max.30 / Max.15	-15~43*3	-20~20	Polypropylene net x 2(washable)
Vertical height differences		Outdoor is higher/lower	m	Max.30 / Max.15	-15~43*3	-20~20	wired:RC-EX3A, RC-E5, RCH-E3 & Interface kit:SC-BIKN2-E
Outdoor operating temperature range		Cooling	°C	-15~43*3	-20~20		
		Heating	°C	-15~43*3	-20~20		
Air filter, Q'ty							
Remote control (option)							

Set model name		Micro Inverter					
		SRK100VNAZR	SRK100ZSR-S	SRK100VSAZR	SRK100ZSR-S	SRK100VSAZR	SRK100ZSR-S
Indoor unit		SRK100ZSR-S	FDC100VNA	FDC100VSA	SRK100ZSR-S	SRK100VSAZR	SRK100ZSR-S
Outdoor unit		FDC100VNA	FDC100VNA	FDC100VSA	SRK100ZSR-S	SRK100VSAZR	SRK100ZSR-S
Power source		1 Phase 220-240V, 50Hz / 220V, 60Hz	1 Phase 220-240V, 50Hz / 220V, 60Hz	3 Phase 380-415V, 50Hz / 380V, 60Hz	3 Phase 380-415V, 50Hz / 380V, 60Hz	3 Phase 380-415V, 50Hz / 380V, 60Hz	3 Phase 380-415V, 50Hz / 380V, 60Hz
Nominal cooling capacity (Min~Max)		kW 10.0 ( 4.0 ~ 11.2 )	10.0 ( 4.0 ~ 11.2 )	10.0 ( 4.0 ~ 11.2 )	10.0 ( 4.0 ~ 11.2 )	10.0 ( 4.0 ~ 11.2 )	10.0 ( 4.0 ~ 11.2 )
Nominal heating capacity (Min~Max)		kW 11.2 ( 4.0 ~ 12.5 )	11.2 ( 4.0 ~ 12.5 )	11.2 ( 4.0 ~ 12.5 )	11.2 ( 4.0 ~ 12.5 )	11.2 ( 4.0 ~ 12.5 )	11.2 ( 4.0 ~ 12.5 )
Power consumption		Cooling/Heating kW 3.19 / 2.78	3.19 / 2.78	3.19 / 2.78	3.19 / 2.78	3.19 / 2.78	3.19 / 2.78
EER/COP		Cooling/Heating 3.13 / 4.03	3.13 / 4.03	3.13 / 4.03	3.13 / 4.03	3.13 / 4.03	3.13 / 4.03
Inrush current		A 5	5	5	5	5	5
Max. current		A 24	24	15	15	15	15
Sound power level*1	Indoor	Cooling/Heating	63 / 63	63 / 63	63 / 63	63 / 63	63 / 63
	Outdoor	Cooling/Heating	70 / 70	70 / 70	70 / 70	70 / 70	70 / 70
Sound pressure level*1	Indoor	Cooling (Hi/Me/Lo/Ulo)	48 / 45 / 40 / 27	48 / 45 / 40 / 27	48 / 45 / 40 / 27	48 / 45 / 40 / 27	48 / 45 / 40 / 27
	Outdoor	Heating (Hi/Me/Lo/Ulo)	48 / 43 / 38 / 30	48 / 43 / 38 / 30	48 / 43 / 38 / 30	48 / 43 / 38 / 30	48 / 43 / 38 / 30
Air flow	Indoor	Cooling/Heating	54 / 56	54 / 56	54 / 56	54 / 56	54 / 56
	Outdoor	Cooling (Hi/Me/Lo/Ulo)	24.5 / 21.3 / 17.6 / 10.4	24.5 / 21.3 / 17.6 / 10.4	24.5 / 21.3 / 17.6 / 10.4	24.5 / 21.3 / 17.6 / 10.4	24.5 / 21.3 / 17.6 / 10.4
		Heating (Hi/Me/Lo/Ulo)	27.5 / 23.2 / 19.1 / 13.6	27.5 / 23.2 / 19.1 / 13.6	27.5 / 23.2 / 19.1 / 13.6	27.5 / 23.2 / 19.1 / 13.6	27.5 / 23.2 / 19.1 / 13.6
Exterior dimensions		HeightxWidthxDepth	mm 339 / 1,197 / 262	845 / 970 / 370	16.5	82	82
Net weight		kg 80	80	82	82	82	82
Ref.piping size		Liquid/Gas	ømm 9.52(3/8") / 15.88(5/8")	Max.50	Max.50 / Max.15	-15~50*3	-20~20
Refrigerant line (one way) length		m	Max.50	Max.50 / Max.15	-15~50*3	-20~20	Polypropylene net x2 (Washable)
Vertical height differences		Outdoor is higher/lower	m	Max.50 / Max.15	-15~50*3	-20~20	wired:RC-EX3A, RC-E5, RCH-E3 & Interface kit:SC-BIKN2-E
Outdoor operating temperature range		Cooling	°C	-15~50*3	-20~20		
		Heating	°C	-15~50*3	-20~20		
Air filter, Q'ty							
Remote control (option)							

### NOTES:

The data are measured under the following conditions (ISO-T1).  
Cooling:Indoor temp. of 27°CDB, 19°CWB, and outdoor temp. of 35°CDB. Heating:Indoor temp. of 20°CDB, and outdoor temp. of 7°CDB, 6°CWB.  
\*1 : Indicates the value in an anechoic chamber. During operation these values are somewhat higher due to ambient conditions.  
\*2 : The values are for one indoor unit operation. (Multi system only)  
\*3 : If a cooling operation is conducted when the outdoor air temperature is -5°C or lower, the outdoor unit should be installed at a place where it is not influenced by natural wind. If wind blows, the low pressure will drop and compressor frequency will increase, this will cause the capacity to drop and may cause the unit to break down.

## SPECIFICATIONS

The values are for simultaneous Multi operation.(except Single case)

			<b>Micro Inverter</b>	<b>Standard Inverter</b>
Set model name			SRK200VSAPZR	SRK100VNP1ZR
			Twin	
Indoor unit			SRK100ZR-S x 2	SRK100ZR-S
Outdoor unit			FDC200VSA	FDC100VNP
Power source			3 Phase 380-415V, 50Hz / 380V, 60Hz	1 Phase 220-240V, 50Hz / 220V, 60Hz
Nominal cooling capacity (Min~Max)			19.0 ( 5.2 ~ 22.4 )	10.0 ( 2.4 ~ 10.5 )
Nominal heating capacity (Min~Max)			22.4 ( 3.3 ~ 25.0 )	11.2 ( 3.2 ~ 11.5 )
Power consumption	Cooling/Heating	kW	7.52 / 7.41	3.09 / 3.28
EER/COP	Cooling/Heating		2.53 / 3.02	3.24 / 3.41
Inrush current		A	5	14.4
Max. current			20	21
Sound power level*1	Indoor*2	Cooling/Heating	63 / 63	63 / 63
	Outdoor	Cooling/Heating	72 / 74	70 / 74
Sound pressure level*1	Indoor*2	Cooling (Hi/Me/L0/Ulo)	48 / 45 / 40 / 27	48 / 45 / 40 / 27
		Heating (Hi/Me/L0/Ulo)	48 / 43 / 38 / 30	48 / 43 / 38 / 30
	Outdoor	Cooling/Heating	58 / 59	57 / 61
Air flow	Indoor*2	Cooling (Hi/Me/L0/Ulo)	24.5 / 21.3 / 17.6 / 10.4	24.5 / 21.3 / 17.6
		Heating (Hi/Me/L0/Ulo)	27.5 / 23.2 / 19.1 / 13.6	27.5 / 23.2 / 19.1
	Outdoor	Cooling/Heating	135 / 135	75 / 80
Exterior dimensions	Indoor	HeightxWidthxDepth	339 x 1,197 x 262	
	Outdoor		1,300 x 970 x 370	845 x 970 x 370
Net weight	Indoor		16.5	
	Outdoor		115	70
Ref.piping size	Liquid/Gas	ømm	9.52(3/8") / 22.22(7/8")	9.52(3/8") / 15.88(5/8")
Refrigerant line (one way) length		m	Max.70	Max.30
Vertical height differences	Outdoor is higher/lower	m	Max.30 / Max.15	Max.20 / Max.20
Outdoor operating temperature range	Cooling	°C	-15~50*3	
	Heating		-15~46*3	
Air filter, Q'ty			-15~20	
			Polypropylene net x2 (Washable)	
Remote control (option)			wired:RC-EX3A, RC-E5, RCH-E3 & Interface kit:SC-BIKN2-E	