



Ceiling Cassette -4way- FDT

Model No.

FDT28KXZE1
FDT36KXZE1
FDT45KXZE1
FDT56KXZE1
FDT71KXZE1
FDT90KXZE1
FDT112KXZE1
FDT140KXZE1
FDT160KXZE1



Draft Prevention Panel (Option)



Remote control (option)

Wired



RC-EX3A



RC-E5



RCH-E3

Wireless

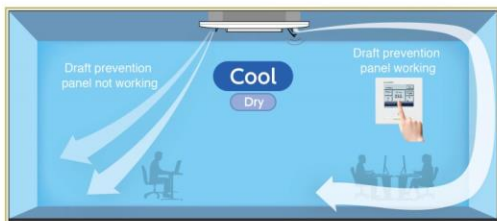


RCN-T-5AW-E2

Draft Prevention Panel

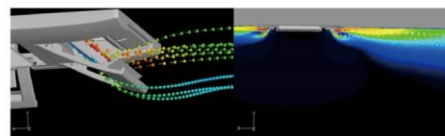
(Option)

Draft Prevention Panel prevents cold / hot draft being blown directly on the user.
It is possible to set Draft Prevention Panel for each air outlet.

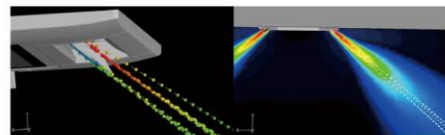


User can position Draft Prevention Panel panels by using the remote controller only (RC-EX3A, RCN-T-5AW-E2).

Advanced airflow control technology cultivated through aircraft development.



Draft Prevention Panel working



Draft Prevention Panel placed at off position

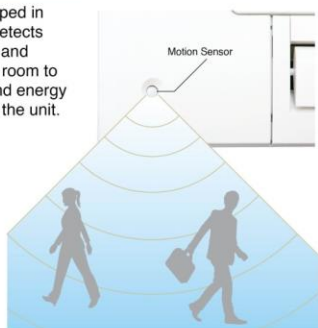
Motion Sensor

(Option)

Motion sensor is equipped in the panel corner and detects the presence/absence and activity of humans in a room to improve the comfort and energy saving performance of the unit.



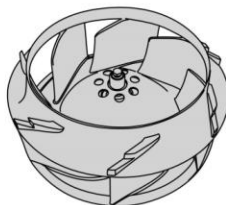
LB-T-5W-E



Improve the aerodynamic performance of the unit

New designed component can have better aerodynamic performance and achieve lower noise.

New design turbo fan



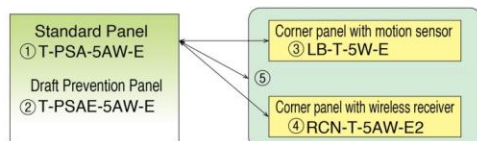
Fan guard (standard equipment)



Panel select pattern

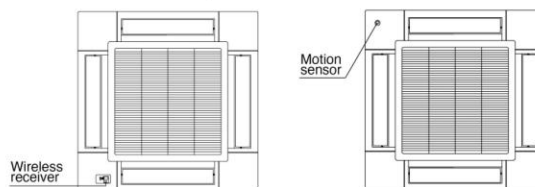
(Option)

8 patterns of panel are available.



- ① Standard Panel only
- ①+③ Standard Panel with corner panel with motion sensor
- ①+④ Standard Panel with corner panel with wireless receiver
- ①+⑤ Standard Panel with corner panel with motion sensor & corner panel with wireless receiver
- ② Draft Prevention Panel only
- ②+③ Draft Prevention Panel with corner panel with motion sensor
- ②+④ Draft Prevention Panel with corner panel with wireless receiver
- ②+⑤ Draft Prevention Panel with corner panel with motion sensor & corner panel with wireless receiver

Installation position of Wireless kit and Motion sensor kit



*Wireless receiver and Motion sensor can be installed to the position as shown

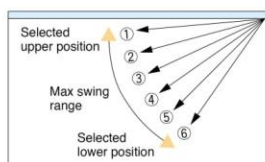
Individual flap control system

According to room conditions, four directions of air flow can be controlled individually by utilizing the flap control system. Individual flap control is available even after installation.



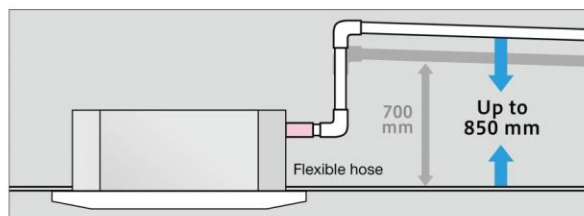
Flap can swing within an upper and lower flap range position within can be selected with a wired remote control.

※The wireless remote control is not applicable to the Individual flap control system.



850mm Drain Pump

Drain can be discharged upwards by 850mm from the ceiling surface. It allows a piping layout with a high degree of freedom. Depending on the installation location and 185mm flexible hose as a standard equipment supports easy workability.

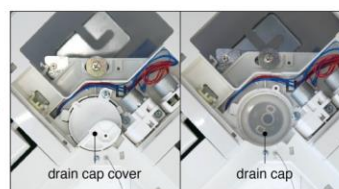


Easy check of drain pan

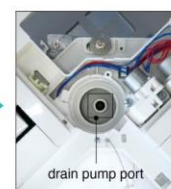
Easy check of drain pan condition is available by removing corner lid only.



Remove corner lid.



Remove drain cap cover and check the condition. It is necessary to clean-up, firstly remove the rubber stopper to drain water out and secondly remove the drain cap.



Clean up the area around the drain pump port.



Specifications

Item	Model	FDT28KXZE1	FDT36KXZE1	FDT45KXZE1	FDT56KXZE1	FDT71KXZE1
Nominal cooling capacity	kW	2.8	3.6	4.5	5.6	7.1
Nominal heating capacity	kW	3.2	4.0	5.0	6.3	8.0
Power source		1 Phase 220-240V, 50Hz				
Power consumption	Cooling Heating	kW	0.02-0.02	0.03-0.03	0.04-0.04	0.08-0.08
			0.02-0.02	0.03-0.03	0.04-0.04	0.08-0.08
Sound power level	dB(A)	49		50	55	62
Sound pressure level	dB(A)	P-Hi:37 Hi:33 Me:30 Lo:28		P-Hi:38 Hi:33 Me:31 Lo:29		P-Hi:47 Hi:35 Me:32 Lo:28
Exterior dimensions H x W x D	mm	Unit:236x840x840 Panel:35x950x950				
Net weight	kg	Unit:20 Standard Panel:5			Unit:21.5 Standard Panel:5	
Air flow	m³/min	P-Hi:15 Hi:14 Me:12 Lo:10	P-Hi:16 Hi:14 Me:12 Lo:10	P-Hi:17 Hi:15 Me:13 Lo:10	P-Hi:20 Hi:16 Me:13 Lo:11	P-Hi:28 Hi:17 Me:14 Lo:12
Outside air intake		Possible				
Panel		T-PSA-5AW-E, T-PSAE-5AW-E				
Air filter, Q'ty		Pocket Plastic net x1 (Washable)				
Remote control(option)		wired:RC-EX3A, RC-E5, RCH-E3 wireless:RCN-T-5AW-E2				
Installation data Refrigerant piping size	mm(in)	Liquid line:ø6.35(1/4") Gas line:ø9.52(3/8")	Liquid line:ø6.35(1/4") Gas line:ø12.7(1/2")			Liquid line:ø9.52(3/8") Gas line:ø15.88(5/8")

Item	Model	FDT90KXZE1	FDT112KXZE1	FDT140KXZE1	FDT160KXZE1
Nominal cooling capacity	kW	9.0	11.2	14.0	16.0
Nominal heating capacity	kW	10.0	12.5	16.0	18.0
Power source		1 Phase 220-240V, 50Hz			
Power consumption	Cooling	0.13-0.13		0.14-0.14	
	Heating	0.13-0.13		0.14-0.14	
Sound power level	dB(A)	65		66	
Sound pressure level	dB(A)	P-Hi:49 Hi:38 Me:36 Lo:31	P-Hi:49 Hi:39 Me:37 Lo:31	P-Hi:49 Hi:42 Me:39 Lo:32	P-Hi:49 Hi:42 Me:39 Lo:33
Exterior dimensions H x W x D	mm	Unit:298x840x840 Panel:35x950x950			
Net weight	kg	Unit:25 Standard Panel:5			
Air flow	m ³ /min	P-Hi:37 Hi:25 Me:22 Lo:15	P-Hi:38 Hi:26 Me:23 Lo:17	P-Hi:38 Hi:28 Me:25 Lo:18	P-Hi:38 Hi:29 Me:26 Lo:19
Outside air intake		Possible			
Panel		T-PSA-5AW-E, T-PSAE-5AW-E			
Air filter, Q'ty		Pocket Plastic net x1 (Washable)			
Remote control(option)		wired:RC-EX3A, RC-E5, RCH-E3 wireless:RCN-T-5AW-E2			
Installation data		Liquid line:ø9.52(3/8") Gas line:ø15.88(5/8")			

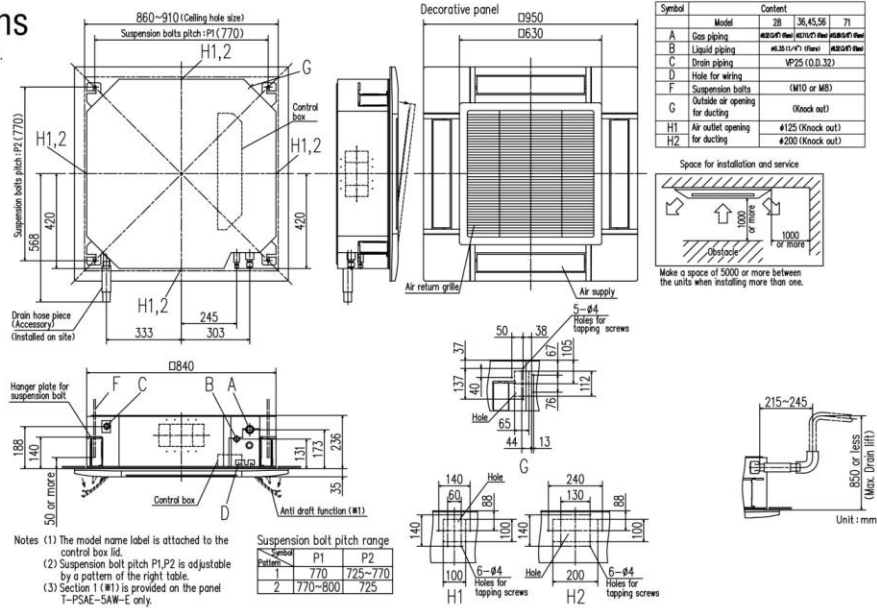
1. The data are measured under the following conditions(ISO-T1). Cooling: Indoor temp. of 27°CDB, 19°CWB, and outdoor temp. of 35°CDB. Heating: Indoor temp. of 20°CDB, and outdoor temp. of 7°CDB, 6°CWB.
2. Sound pressure level indicates the value in an anechoic chamber. During operation these values are somewhat higher due to ambient conditions.



Dimensions

All measurements in mm.

FDT28KXZE1
36KXZE1
45KXZE1
56KXZE1
71KXZE1



FDT90KXZE1
112KXZE1
140KXZE1
160KXZE1

