

CORPORATE DATA

As of March 31, 2018

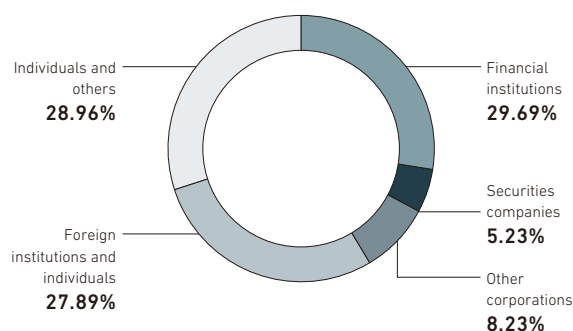
Head Office:	16-5, Konan 2-chome, Minato-ku, Tokyo 108-8215, Japan Phone: +81-3-6716-3111 January 11, 1950
Established:	January 11, 1950
Paid-in Capital:	¥265.6 billion
Total Number of Issuable Shares:	600,000,000
Total Number of Shares Issued:	337,364,781
Number of Shareholders:	270,890
Number of Employees:	80,652 (Consolidated) 14,717 (Non-consolidated)

Stock Listings:	Tokyo, Nagoya, Fukuoka, and Sapporo Stock Exchanges
Ticker Code:	7011
Manager of the Register of Shareholders:	Mitsubishi UFJ Trust and Banking Corporation 4-5, Marunouchi 1-chome, Chiyoda-ku, Tokyo 100-8212, Japan
Independent Auditors:	KPMG AZSA LLC 1-2 Tsukudo-cho, Shinjuku-ku, Tokyo 162-8551, Japan

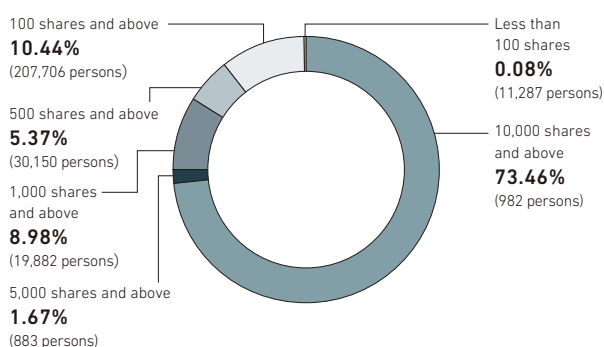
Major Shareholders

	Number of shares owned by major shareholders	Shareholder Composition (%)
The Master Trust Bank of Japan, Ltd. (Trust Account)	16,478,900	4.88
Japan Trustee Services Bank, Ltd. (Trust Account)	11,603,300	3.43
Meiji Yasuda Life Insurance Company	8,002,274	2.37
The Nomura Trust and Banking Co., Ltd. (Retirement Benefit Trust Account for The Bank of Tokyo-Mitsubishi UFJ, Ltd.)	6,526,300	1.93
Japan Trustee Services Bank, Ltd. (Trust Account 5)	6,404,400	1.89
State Street Bank West Client - Treaty 505234	6,212,881	1.84
Mizuho Securities Co., Ltd.	6,108,020	1.81
Japan Trustee Services Bank, Ltd. (Trust Account 9)	5,396,500	1.59
Japan Trustee Services Bank, Ltd. (Trust Account 1)	4,760,000	1.41
Japan Trustee Services Bank, Ltd. (Trust Account 2)	4,686,000	1.38

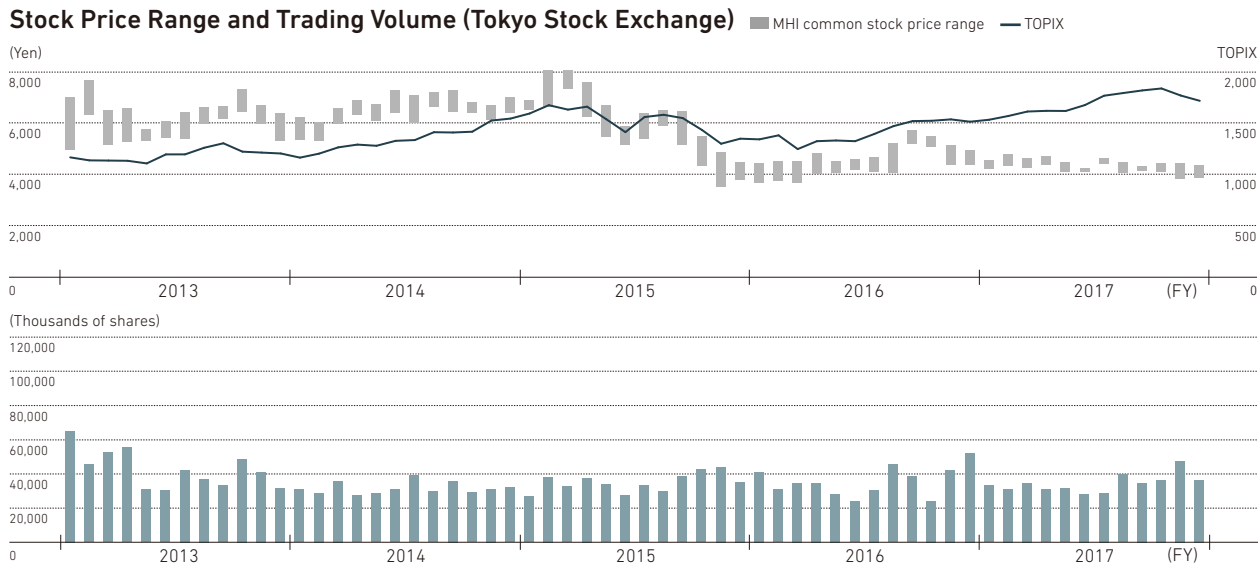
Classified by Type of Shareholder



Classified by Number of Holdings



Stock Price Range and Trading Volume (Tokyo Stock Exchange)



Note: The Company conducted a 1-for-10 reverse stock split on common shares on October 1, 2017. Data on share price and trading volumes for periods prior to this date has been retroactively calculated as if the reverse stock split had taken place previously.