



Mitsubishi Minatomirai Industrial Museum

**Manufacturing
is interesting!**



On LAND, SEA, SKY, and SPACE...

Experience the real size!

The Mitsubishi Minatomirai Industrial Museum is an exhibition facility for science, technology, and industry established by Mitsubishi Heavy Industries, Ltd. in 1994.

Through a wide range of manufacturing, from the deep sea to outer space, everyone can encounter technologies that support our daily lives and technologies that solve social issues.

Each zone and corner introduces science and technology in an approachable way.

We hope that this will be a place where you can deepen your understanding of present and future manufacturing and expand your dreams.



**Virtual Tour
Station**

LAND zone

2F

SKY&SPACE zone

SEA zone

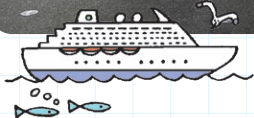
**SPECIAL
Exhibition**

FUTURE GATE

**Sports
Corner**

FUTURE GATE

The Future Stream section of the exhibition offers fun contents about Mitsubishi Heavy Industries (MHI) Group's past, present and future. You enjoy and understand models and the complex media wall of the photos and line drawings on the wall graphics.



Check Here!

Introducing MHI Group's SDGs initiatives. With advanced technology and cutting-edge ideas, we aim to enrich people's lives.



Technology & Products

You will learn about product models and see panel exhibitions of MHI Group products and technologies across land, sea, sky, and space.



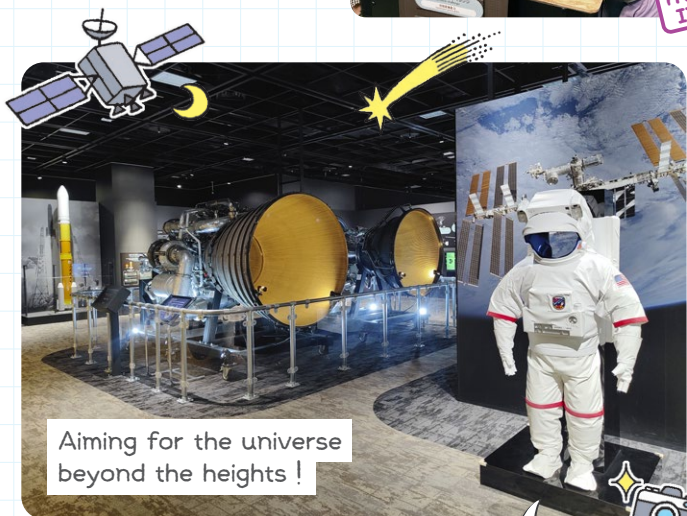
SKY&SPACE zone



MHI began providing launch transportation services using the H-IIA rocket in 2007. See the impressive exhibits of Japan's aerospace technology, including the actual fuel tanks and engines of the rocket, as well as models of the aircraft used in actual wind tunnel tests.

Astronaut Challenge Corner

You can challenge the questions given in the astronaut selection exam and the games that test the abilities required of astronauts.

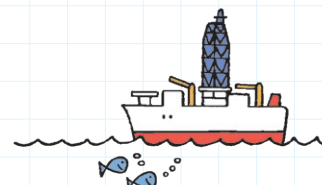


You can take a photo wearing a space suit!

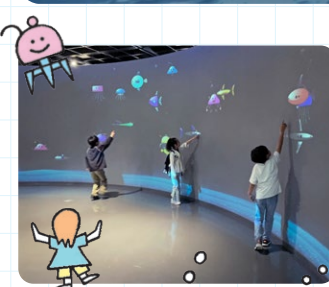
Mitsubishi MU-2 wind tunnel test model

The wind tunnel test model of the Mitsubishi MU-2, was actually used in the wind tunnel tests required for aircraft development.

SEA zone



The SHINKAI 6500 is one of the world's most advanced deep sea submersible research vessels. It can dive to a depth of 6500 meters, which means that almost 98% of the world's ocean floors can be surveyed. This full-size disassembled mockup will incorporate reproductions of the outside and inside of the vessel.



Let's Make a Sea Mechanical!

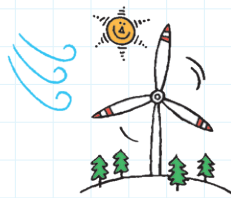
In this corner, visitors can create their own Sea Mechanicals and display them on the screen.



What is it?



The cockpit of the Shinkai 6500 was made of titanium alloy to withstand the high water pressure of the deep sea. To verify its pressure resistance, a 1/4 scale model of the actual product was made and subjected to a crushing experiment.



Regarding the MHI Group's efforts to declare achieving carbon neutrality by 2040, we will approach the latest technologies and solutions from the fields of electric power, transportation, logistics, and thermal systems. Through our achievements in the fields of decarbonization, we will contribute to the realization of a sustainable society.

Touch Wall

A touch wall that starts moving when you touch the picture on the wall. Through the introduction of each category of electricity, transportation, logistics, and thermal systems, we will make it easier to understand the structure of social infrastructure and environmental issues.

I can see the energy flow!



Let's try it!

In thermal and nuclear power plants, turbines rotate at incredible speeds. Let's take a look at how rotational energy is converted into electrical energy.



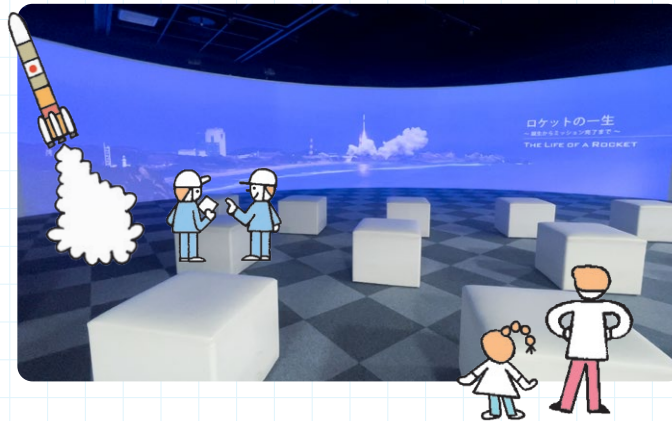
Toward the realization of a sustainable society

Virtual Tour Station

On a cylindrical screen with a total width of 15 meters, content related to manufacturing, such as technologies from rocket manufacturing to launch, will be screened.



Watch the English version of the video here ↑



Information



Instagram



X



Facebook

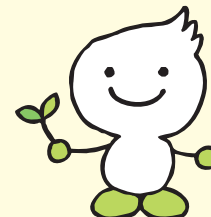


LINE



Museum Mascot

Introducing "Techno-kun", the character of the Mitsubishi Minatomirai Industrial Museum. The light, fluffy and adorable Techno-kun was created out of the image of science and technology of the future, which will operate in harmony with nature. The budding leaves that Techno-kun is holding represent the hope that the "budding ideas" that children have for science and technology will spread into the future.



Techno-kun



Hours

- Weekday: From 10:00 a.m. to 3:00 p.m. (no admission after 2:30 p.m.)
- Saturday, Sunday, and holidays: From 10:00 a.m. to 4:00 p.m. (no admission after 3:30 p.m.)
- ※ It may vary depending on the time of year.
- Please check the website for details such as opening days.

Closed

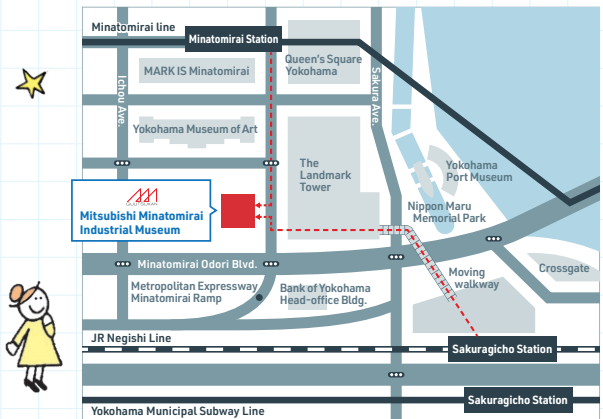
- Every Tuesday and Wednesday (following day if Tuesday and Wednesday is a national holiday), at the year-end and New Year, and on specified closed days.

Admission

- Adults: 500 yen / Junior/Senior high school students: 300 yen / Elementary school students: 200 yen
- Preschool children and seniors aged 65 or older: Free (with ID)
- Handicapped persons and their attendants: Free (with certificate)

Visitor Information

- Re-entry on the day is not permitted.
- Please refrain from eating, drinking, smoking or bringing pets into the museum.
- Intoxicated persons will not be admitted into the museum.
- There are coin lockers on the first floor where you can store your luggage (you will be refunded when you collect your luggage).
- Please notify staff if you use a baby stroller or wheelchair (an elevator is available for use).



Accessing the Museum

By train:

- 3-minute walk from the No.5 Keyaki-dori Ave. Exit of Minatomirai Station on the Minatomirai Line
- 8-minute walk from Sakuragicho Station on the JR Negishi Line or Yokohama Subway Line

By car:

- Exit on the Minatomirai ramp from the Yokohane Line of the Metropolitan Expressway
- Use the paid parking in the basement of the KDX Yokohama Minato Mirai Tower

KDX Yokohama Minato Mirai Tower, 3-3-1, Minatomirai, Nishi-ku, Yokohama-shi 220-8401
TEL. +81-45-200-7351 / FAX. +81-45-200-9902
<https://www.mhi.com/minatomirai/en/>



Please check our website for more details.

2025.07