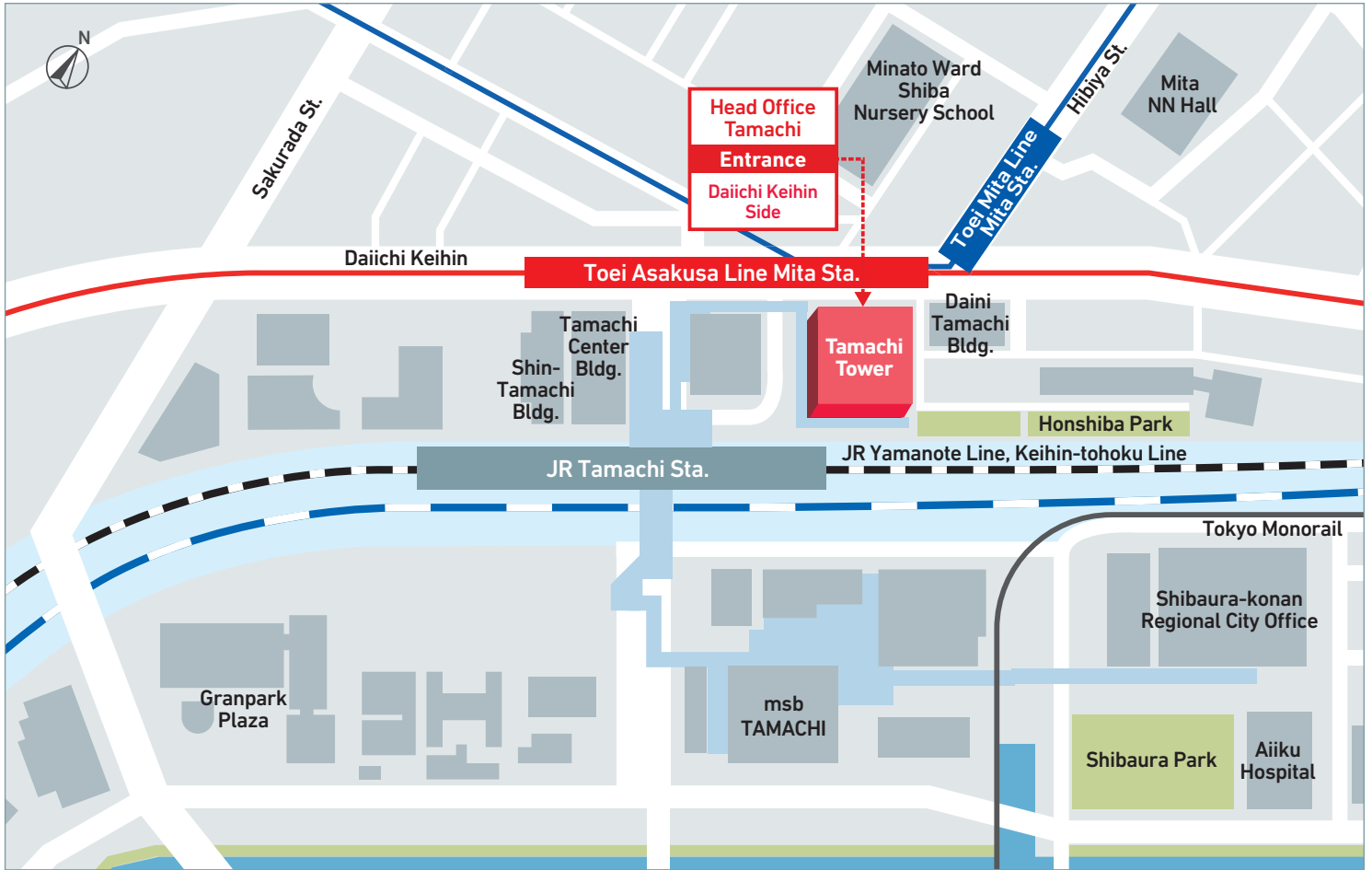


Tamachi Tower Area Map



- ➔ 2-minutes walk from JR Tamachi Station (Yamanote / Keihin-Tohoku Line)
- ➔ Direct access to Mita subway station (Toei Mita / Asakusa Line)

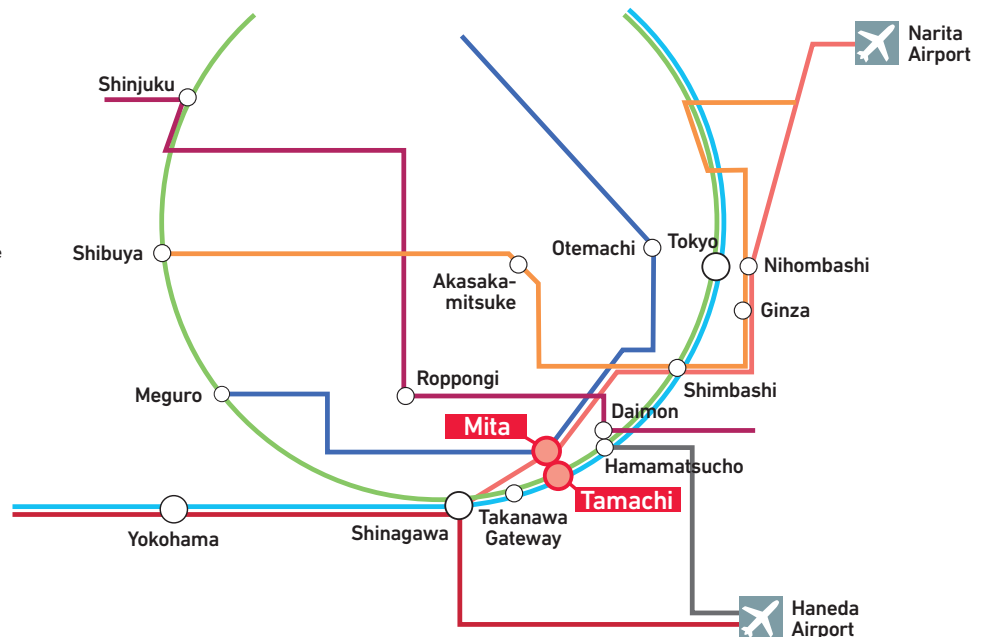
Tamachi Tower 33-11, Shiba 5-chome, Minato-ku, Tokyo, 108-8015, Japan

➔ Access from the airport

- 14 minutes from Haneda Airport by train
- 60 minutes from Narita Airport by train

Route map

- JR Yamanote Line
- JR Keihin-Tohoku · Negishi Line
- Tokyo Metro Ginza Line
- Toei Asakusa Line
- Toei Mita Line
- Toei Oedo Line
- Keikyu Line
- Tokyo Monorail



* Above travel times do not include time required for changing and waiting for trains. Also travel times may vary slightly depending on operation conditions.