

# Progressing Along with Society

Since its foundation, MHI Group has consistently strived together with society, including our customers, partners, and other stakeholders to take on the challenges of creating new *monozukuri*—the traditional Japanese concept of craftsmanship—ahead of times, thereby contributing to the development of society by providing products and

services that support people’s lives. Leveraging the ample accomplishments, expertise, and human resources accumulated through the *monozukuri*, we will continue to take on the challenges of building a better future for the world, engaging in issues such as balancing economic development and reducing environmental impact of economic activity.

## Expanding our business domains by taking changes in social values and technological innovations based on manufacturing

■ As we have progressed along with Japan’s modernization, with shipbuilding at our core, MHI Group has diversified its business portfolio by advancing into various mechanical fields such as automobiles, aircraft, turbines, and internal combustion engines.

■ In the post-war years, MHI supported rapid economic growth by responding to the rapidly increasing demand for electricity and brisk private-sector capital investment, while focusing on the shipbuilding business, and preparing for spinning off the automobile business unit.

■ In response to the severe recession, MHI shifted from business model that relied heavily on the shipbuilding business by focusing on growing fields such as power systems and aircraft. MHI also proactively promoted the globalization of its business in search of a way to tap into international markets. We also honed our advanced technological capabilities, as represented by our efforts in space development.

1880’s >>

1950’s >>

1970’s >>

### Progressing along with Japan’s modernization

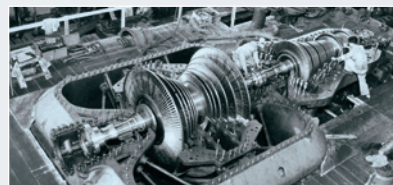


Nagasaki Shipyard & Machinery Works’ first steel steamship, the Yugaomaru



The Nippon, which made a successful round-the world goodwill flight

### Supporting post-war reconstruction and rapid economic growth in Japan

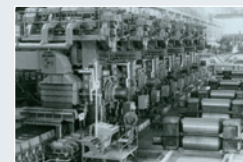


Mitsubishi Westinghouse turbine



The first MU-2A multi-purpose light aircraft

### Playing a part in a technology-based nation



Rolling plant for steelworks



The first N-1 rocket



Opening ceremony for the total station construction portion of the Channel Tunnel under the Strait of Dover

■ Responding to growing energy demand accompanying economic development while also reducing environmental impact of economic activity is an issue we face today. MHI Group contributes to a sustainable society by providing a variety of products and solutions, such as offshore wind turbines utilizing renewable energy, clean gas power, CO<sub>2</sub> capture plant and flue gas desulfurization unit.

2000's >>

Contributing to a sustainable society

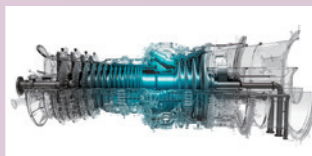


CO<sub>2</sub> capture plant

## Present and Future

### Energy Transition

#### Decarbonization



Hydrogen co-firing/100% hydrogen firing gas turbine



CCS/CCUS (CO<sub>2</sub> Capture, Utilization, and Storage)

▶ For details, please see page 32.

### Smart Infrastructure

#### Electrification and Intelligent Systems



ΣSynX-powered AGF



▶ For details, please see "Smart Infrastructure Enabled by DX Utilization" on page 49.