

CORPORATE DATA (AS OF MARCH 31, 2017)

Head Office: 16-5, Konan 2-chome, Minato-ku, Tokyo 108-8215, Japan
 Phone: +81-3-6716-3111
 Fax: +81-3-6716-5800

Established: January 11, 1950

Paid-in Capital: ¥265.6 billion

Total Number of Issuable Shares: 6,000,000,000

Total Number of Shares Issued: 3,373,647,813

Number of Shareholders: 281,648

Number of Employees: 82,728 (Consolidated)
 16,824 (Non-consolidated)

Stock Listings: Tokyo, Nagoya, Fukuoka, and Sapporo Stock Exchanges

Ticker Code: 7011

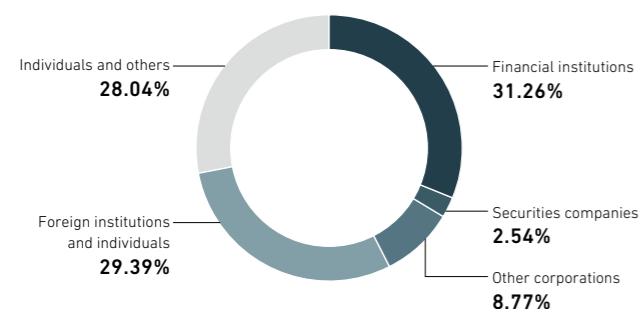
Manager of the Register of Shareholders: Mitsubishi UFJ Trust and Banking Corporation
 4-5, Marunouchi 1-chome, Chiyoda-ku, Tokyo 100-8212, Japan

Independent Auditors: Ernst & Young ShinNihon LLC Hibiya Kokusai Bldg.,
 2-3, Uchisaiwai-cho 2-chome, Chiyoda-ku, Tokyo 100-0011, Japan

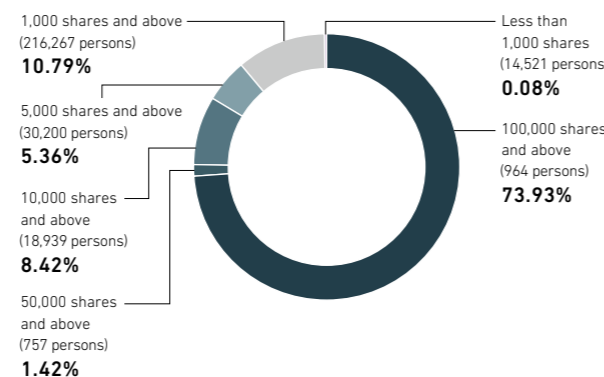
Major Shareholders

	Number of shares owned by major shareholders	% of total shares
Japan Trustee Services Bank, Ltd. (Trust Account)	170,156,900	5.04%
The Master Trust Bank of Japan, Ltd. (Trust Account)	146,123,000	4.33%
The Nomura Trust and Banking Co., Ltd. (Retirement Benefit Trust Account for The Bank of Tokyo-Mitsubishi UFJ, Ltd.)	105,263,000	3.12%
Meiji Yasuda Life Insurance Company	80,022,741	2.37%
Japan Trustee Services Bank, Ltd. (Trust Account 5)	61,577,000	1.82%
State Street Bank West Client-Treaty 505234	48,495,460	1.43%
Japan Trustee Services Bank, Ltd. (Trust Account 1)	45,662,000	1.35%
Japan Trustee Services Bank, Ltd. (Trust Account 7)	45,238,000	1.34%
Japan Trustee Services Bank, Ltd. (Trust Account 2)	45,143,000	1.33%
THE BANK OF NEW YORK MELLON SA/NV 10	37,168,172	1.10%

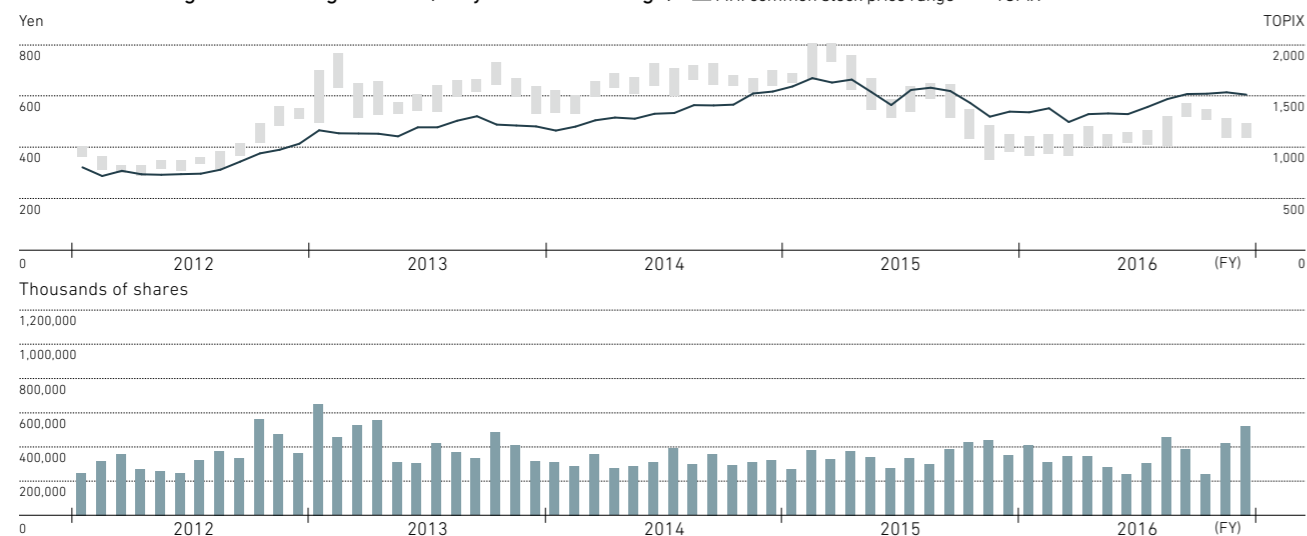
Classified by Type of Shareholder



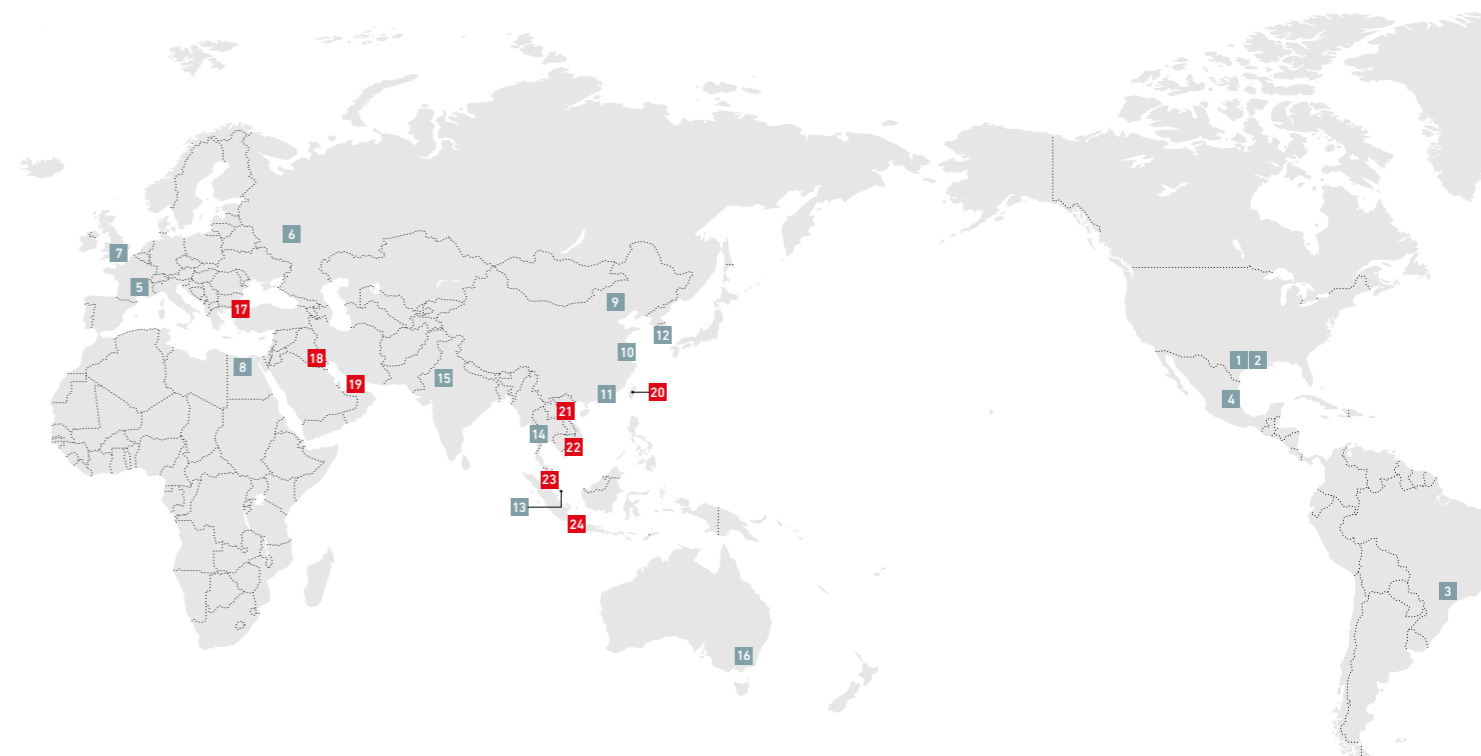
Classified by Number of Holdings



Stock Price Range and Trading Volume (Tokyo Stock Exchange)



OVERSEAS HEAD OFFICES AND NETWORKS / OVERSEAS OFFICES



Overseas Head Offices and Networks

- North America**
 - 1 Mitsubishi Heavy Industries America, Inc.
 - 2 MHI Shared Services Americas, Inc.
- Latin America**
 - 3 Mitsubishi Industrias Pesadas do Brasil Ltda.
 - 4 Mitsubishi Heavy Industries Mexicana, S.A. de C.V.
- Europe**
 - 5 Mitsubishi Heavy Industries France S.A.S.
 - 6 MHI Russia LLC
 - 7 Mitsubishi Heavy Industries Europe, Ltd.
- Africa**
 - 8 MHI Technologies S.A.E.
- Asia and Oceania**
 - 9 Mitsubishi Heavy Industries (China) Co., Ltd.
 - 10 Mitsubishi Heavy Industries (Shanghai) Co., Ltd.
 - 11 Mitsubishi Heavy Industries, (Hong Kong) Ltd.
 - 12 MHI KOREA, Ltd.
 - 13 Mitsubishi Heavy Industries Asia Pacific Pte. Ltd.
 - 14 Mitsubishi Heavy Industries (Thailand) Ltd.
 - 15 Mitsubishi Heavy Industries India Private Ltd.
 - 16 MHI Australia, Pty. Ltd.

Overseas Offices

- Europe**
 - 17 Turkey Liaison Office
- Middle East**
 - 18 Basra Liaison Office
 - 19 Dubai Office
- Asia**
 - 20 Taipei Office
 - 21 Hanoi Liaison Office
 - 22 Ho Chi Minh City Liaison Office
 - 23 Kuala Lumpur Office
 - 24 Jakarta Liaison Office

For information on overseas Group companies not provided above, please refer to the "Global Network" section of our website.

> <http://www.mhi.com/network/>