

Head Office: 16-5, Konan 2-chome, Minato-ku,
Tokyo 108-8215, Japan
Phone: +81-3-6716-3111
Fax: +81-3-6716-5800

Established: January 11, 1950

Paid-in Capital: ¥265.6 billion

Total Number of Issuable Shares: 6,000,000,000

Total Number of Shares Issued: 3,373,647,813

Number of Shareholders: 272,971

Number of Employees: 80,583 (Consolidated)
22,147 (Non-consolidated)

Stock Listings: Tokyo, Nagoya, Fukuoka, and
Sapporo Stock Exchanges

Ticker Code: 7011

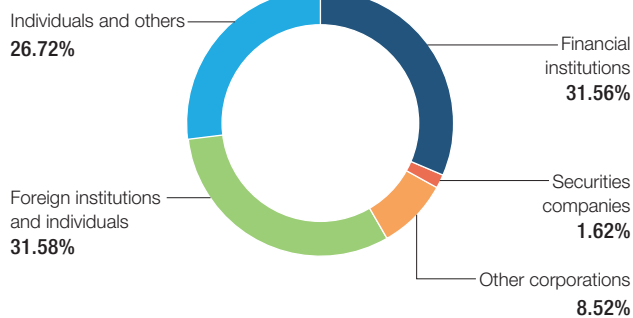
Manager of the
Register of Shareholders: Mitsubishi UFJ Trust and Banking Corporation
4-5, Marunouchi 1-chome, Chiyoda-ku, Tokyo
100-8212, Japan

Independent Auditors: Ernst & Young ShinNihon LLC
Hibiya Kokusai Bldg., 2-3, Uchisaiwai-cho
2-chome, Chiyoda-ku, Tokyo 100-0011, Japan

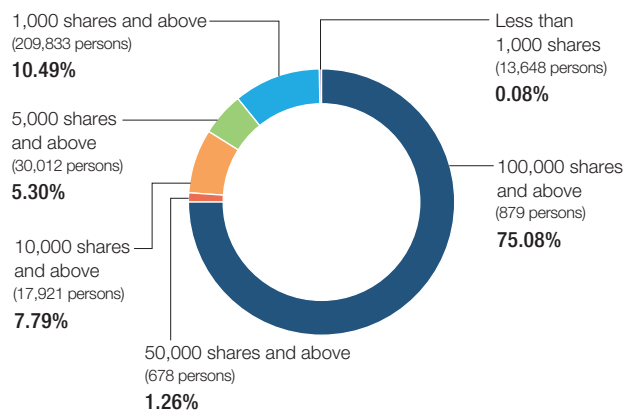
Major Shareholders

	Number of shares owned by major shareholders	% of total shares
The Master Trust Bank of Japan, Ltd. (Trust Account)	158,299,000	4.69%
Japan Trustee Services Bank, Ltd. (Trust Account)	134,214,900	3.97%
The Nomura Trust and Banking Co., Ltd. (Retirement Benefit Trust Account for The Bank of Tokyo-Mitsubishi UFJ, Ltd.)	125,666,000	3.72%
JP Morgan Chase Bank 380072	80,369,700	2.38%
Meiji Yasuda Life Insurance Company	80,022,741	2.37%
The Nomura Trust and Banking Co., Ltd. (Retirement Benefit Trust Account for Mitsubishi UFJ Trust and Banking Corporation)	45,934,000	1.36%
Tokio Marine & Nichido Fire Insurance Co., Ltd.	44,100,000	1.30%
Japan Trustee Services Bank, Ltd. (Trust Account 1)	39,451,000	1.16%
Japan Trustee Services Bank, Ltd. (Trust Account 2)	37,152,000	1.10%
Japan Trustee Services Bank, Ltd. (Trust Account 6)	37,127,000	1.10%

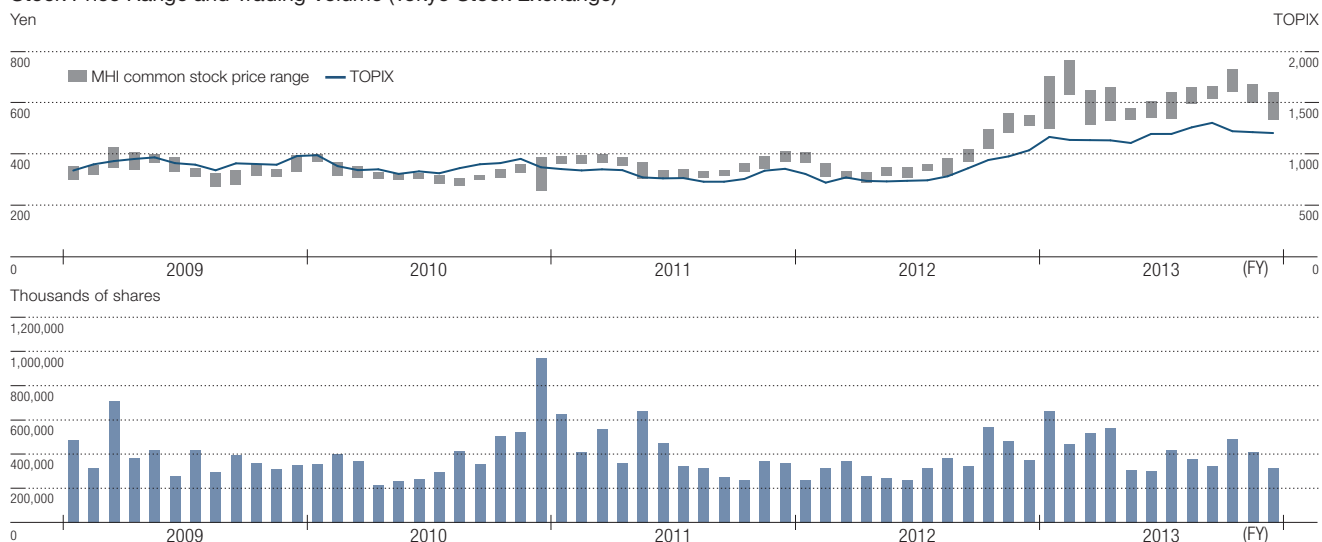
Classified by Type of Shareholder

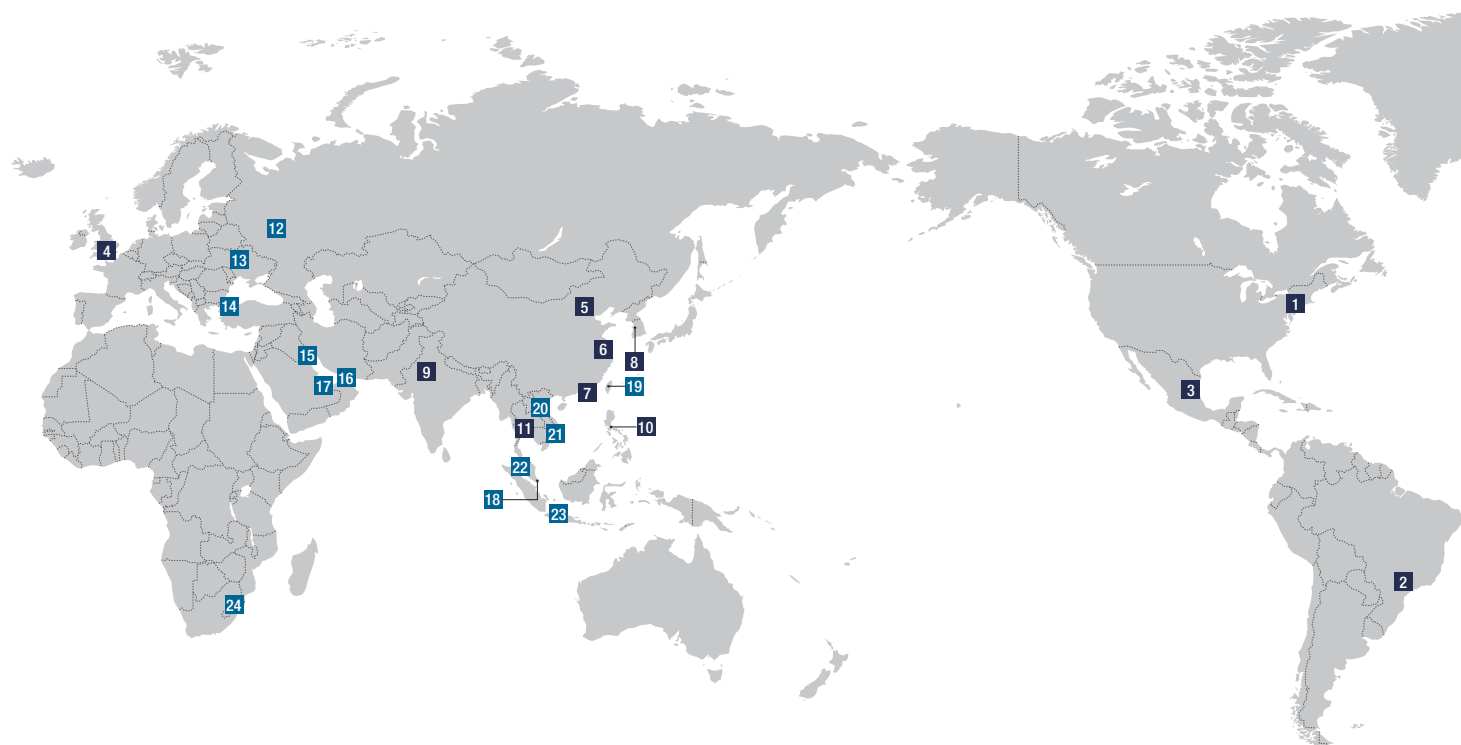


Classified by Number of Holdings



Stock Price Range and Trading Volume (Tokyo Stock Exchange)





Overseas Network

North America

- 1** Mitsubishi Heavy Industries America, Inc.

Latin America

- 2** Mitsubishi Industrias Pesadas do Brasil Ltda.
3 Mitsubishi Heavy Industries Mexicana, S.A. de C.V.

Europe

- 4** Mitsubishi Heavy Industries Europe Ltd.

Asia

- 5** Mitsubishi Heavy Industries (China) Co., Ltd.
6 Mitsubishi Heavy Industries (Shanghai) Co., Ltd.
7 Mitsubishi Heavy Industries, (Hong Kong) Ltd.
8 MHI KOREA, Ltd.
9 Mitsubishi Heavy Industries India Private Ltd.
10 Mitsubishi Heavy Industries Philippines, Inc.
11 Mitsubishi Heavy Industries (Thailand) Ltd.

Overseas Offices

Europe

- 12** Moscow Liaison Office
13 Kiev Liaison Office
14 Istanbul Liaison Office

Middle East

- 15** Basra Liaison Office
16 Dubai Office
17 Abu Dhabi Office

Asia

- 18** Representative Office for Asia Pacific
19 Taipei Office
20 Hanoi Liaison Office
21 Ho Chi Minh City Liaison Office
22 Kuala Lumpur Office
23 Jakarta Liaison Office

Africa

- 24** Johannesburg Office

For information on overseas Group companies not provided above, please refer to the "Global Network" section of our website.

 <http://www.mhi-global.com/network/index.html>