

type
HDC

subject
EXAMPLE OF TROUBLE
DUE TO LOOSENED FIXING BOLTS (for terminals, etc.)

Ref. No.
AS-DC14-001
Issued: October, 2014

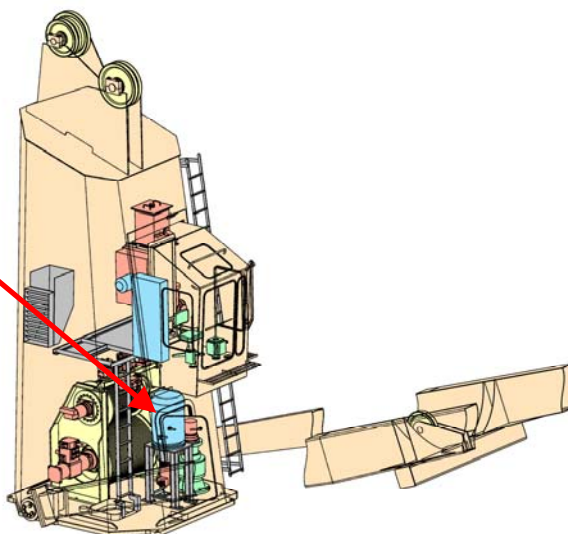
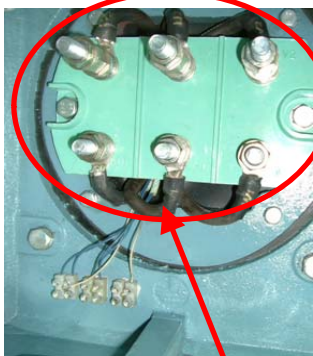
This is to explain example of trouble due to loosened fixing bolts of parts, and to promote awareness for importance of tightness of those bolts & nuts.

In the below mentioned cases, vibration during voyage and cargo work is considered to be a cause, and for the safe and stable operation of deck crane, please check tightness of bolts and nuts of every parts, and continue those check periodically, according to instruction in the manual.

Case Example

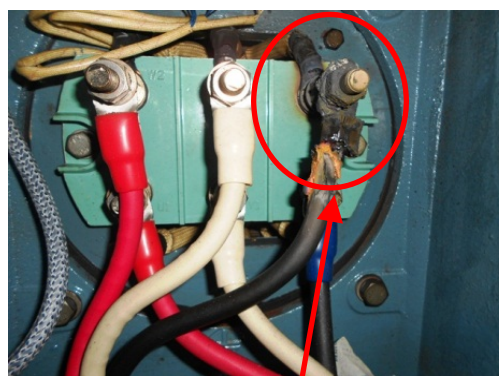
【Terminal of Electric Motor】

Inside of terminal box

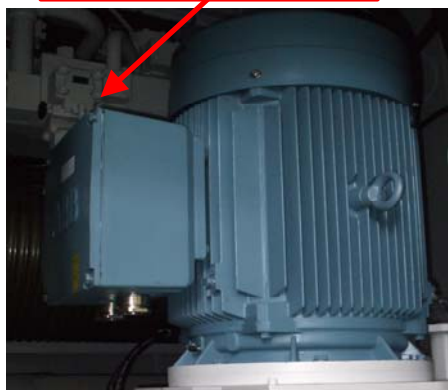


For deck cranes of 30 tons
Size of bolts : M12
Tightening torque : 50Nm
* 6 pcs for outer cable and 6 pcs of internal cable
(total: 12pcs)

Example of burned terminal



Location of terminal box



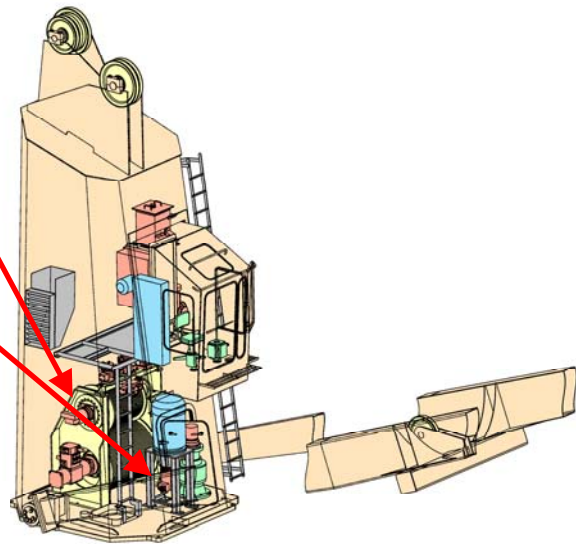
Burned due to loose connection of crimping terminal

【Terminal box of solenoid valve】

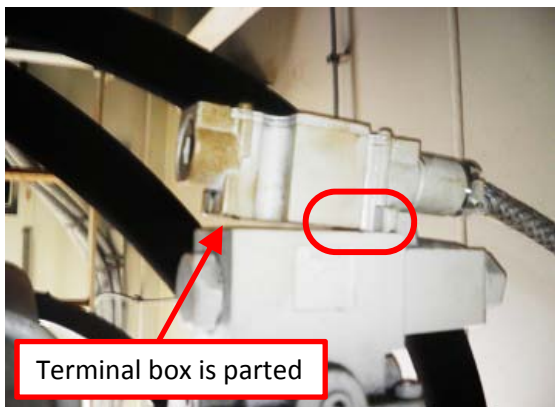
Solenoid valve for grab / hook change
(located at frame of winch)

Solenoid valve for brake release
(located at pump unit stand)

Fixing screw × 2 pcs
(cover of terminal is opened)
Tightening torque : 0.5N-m ± 10%

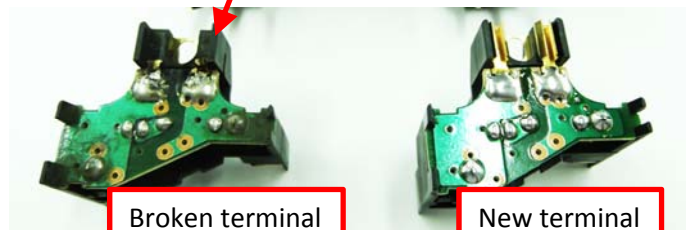


Example case of breakage



Terminal box is parted

Terminal was broken and fuse (F2)
blew out due to short circuit



Broken terminal

New terminal

Contact details of this matter (window for after sales service)

Marine Machinery Business Sec., Hydraulics & Machinery Business Dept.

Hydraulics & Machinery Div.

MITSUBISHI HEAVY INDUSTRIES, LTD.

PIC: Mr. Y. Tanabe / M. Ushiroguchi / K. Yoneyama / K. Hayashi

Tel: +81-83-267-7094 / Fax: +81-83-266-8173

E-mail: yoshiyuki_tanabe@mhi.co.jp / masahiro_ushiroguchi@mhi.co.jp

kohei_yoneyama@mhi.co.jp, koji4_hayashi@mhi.co.jp