

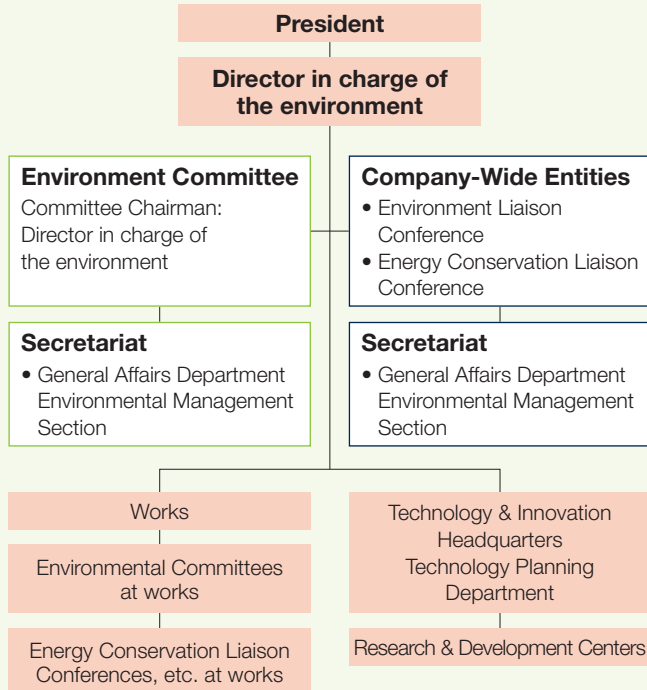
## ENVIRONMENTAL ACTIVITIES

**MHI deploys environmental preservation activities throughout the product lifecycle, from development and design to procurement of raw materials, production, on-site installation and final disposal. MHI is working to alleviate the increasing environmental burdens across the globe by providing environmentally friendly products and technologies in diverse fields.**

### Environmental Management

MHI has in place an environmental management system that covers the entire group and promotes group-wide, consolidated environmental management efforts. MHI established the Environmental Committee, chaired by the director in charge of the environment, to plan and propose annual environmental actions for the entire company. Decisions are conveyed to the entire company and all group companies. Environmental Committees established at each works promote policies and conduct environmental management corresponding to the specific features of each works.

### Environmental Management Structure (as of April 1, 2012)



### Measures Against Global Warming

The MHI Group is working to reduce CO<sub>2</sub> emissions based on medium-term environmental targets set for the entire company. We are aiming for further emission cuts through the introduction of energy-saving devices and use of renewable energy.

### Promotion of Energy-Saving and CO<sub>2</sub> Emission Control Measures

#### Consuming One Million Kilowatt-Hours Annually of Green Energy from Wind Power Generation

MHI contracted with Japan Natural Energy Company Limited to purchase one million kilowatt-hours of wind-generated power annually over 15 years from April 2002. In fiscal 2011, MHI used 500,000 kilowatt-hours of this power at its Head Office and 504,000 kilowatt-hours at the Mitsubishi Minatomirai Industrial Museum.



The Certificate of Green Power

### Conserving Resources, Managing Waste, and Protecting Water Resources

In addition to further reducing and properly managing waste, to protect water resources we have set a target to lower the water consumption during production from fiscal 2011.

### Protecting Water Resources

#### Reducing Water Consumption During Production

In fiscal 2010, MHI decided to cut its annual water consumption to 9,350,000 metric tons by fiscal 2012, a decline of 2% from the average of 9,540,000 metric tons per year for fiscal 2005 through 2007. Reduction efforts at each works enabled MHI to lower the water consumption by 24.3%, to 7,220,000 metric tons in fiscal 2011.